

# Evolução das condições meteorológicas Portugal Continental

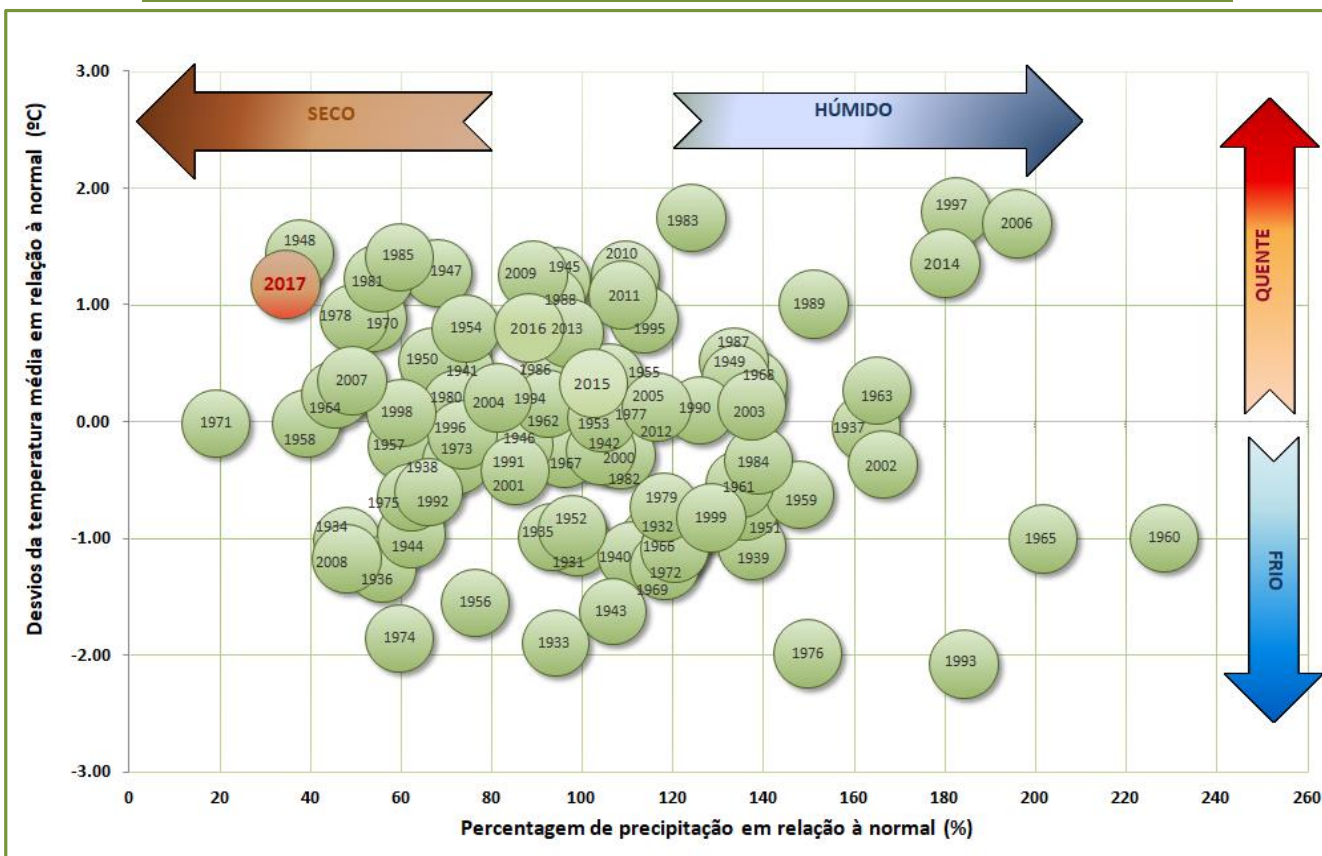
2017

Reunião Plenária da Comissão de Gestão  
de Albufeiras

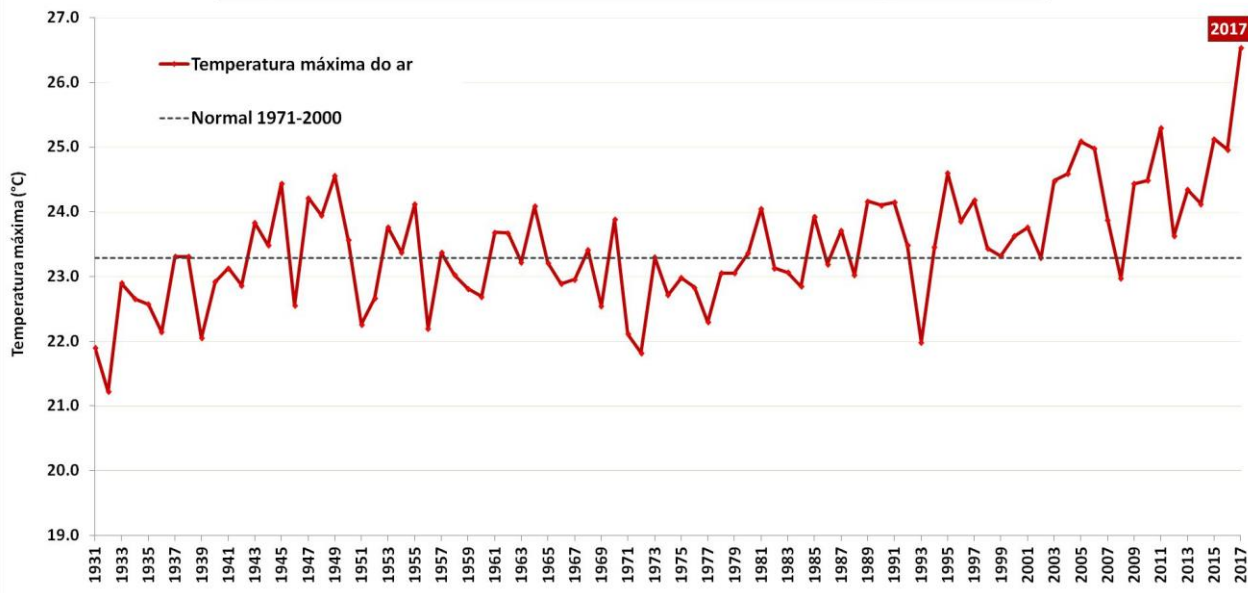
APA, 7 de dezembro de 2017

IPMA

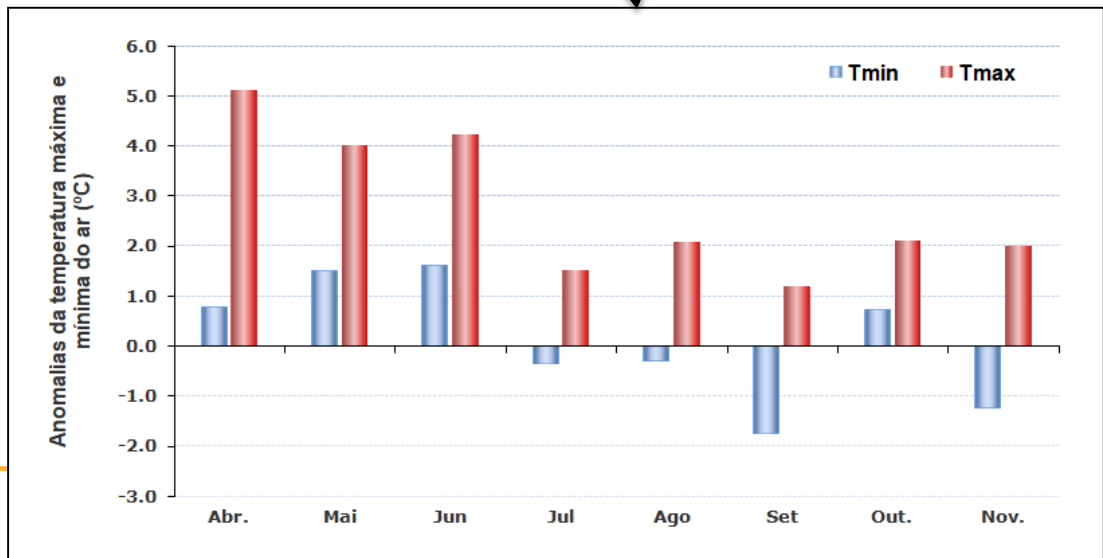
2º mais seco desde 1931  
5º mais quente desde 2000  
Temperatura máxima do ar mais alta desde 1931

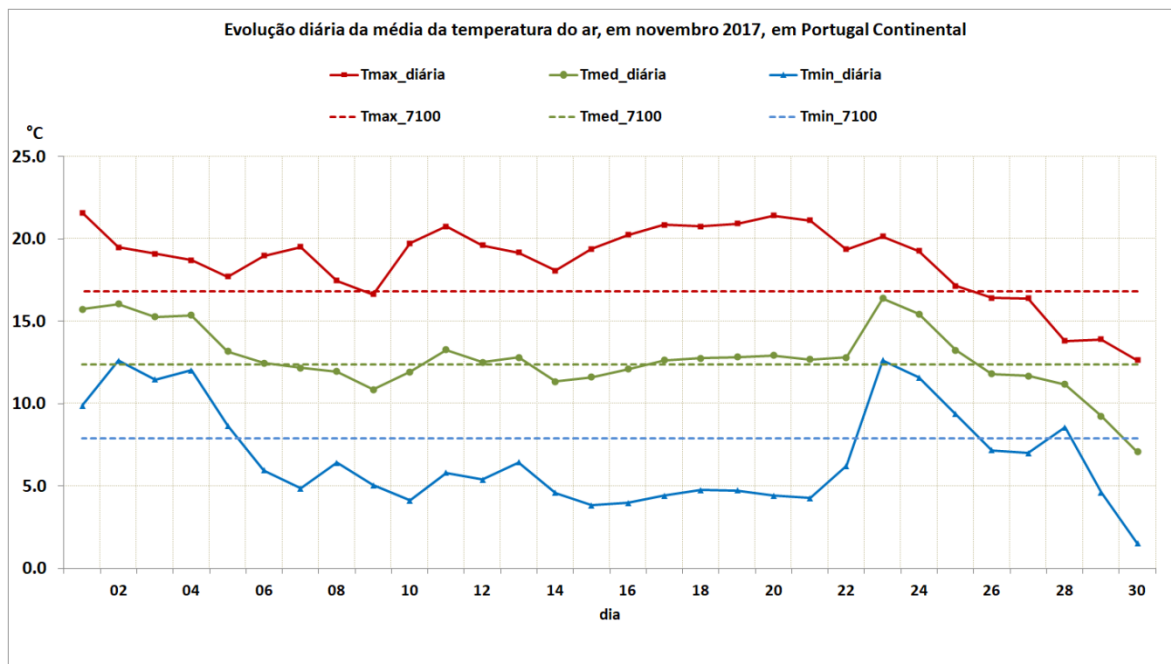


**Temperatura máxima do ar entre abril e novembro em Portugal Continental**



**Maior valor da  
temperatura máxima  
Entre abril e novembro  
desde 1931**





Temperatura máxima

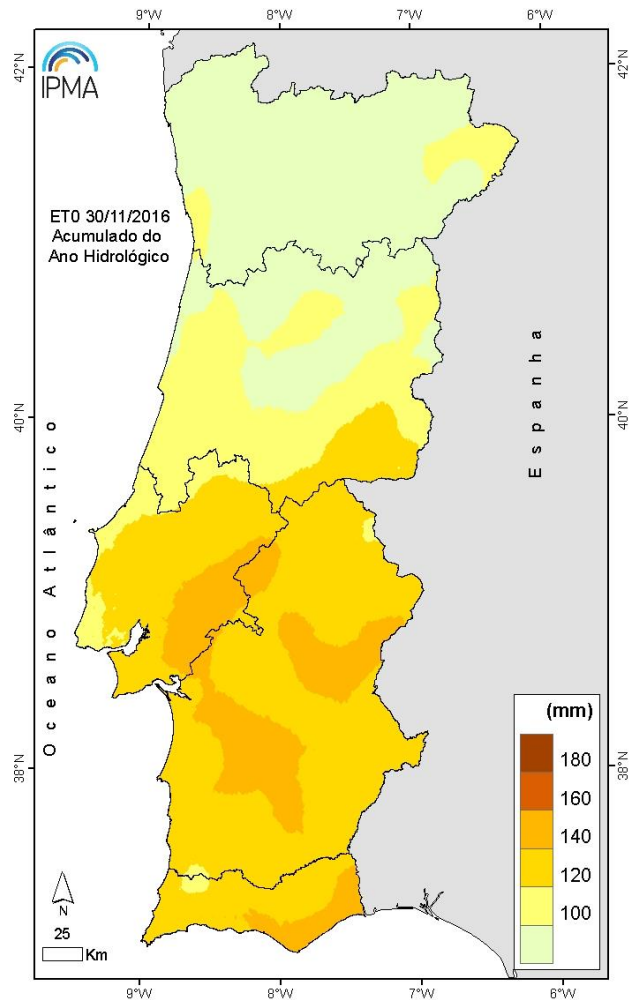


Temperatura mínima

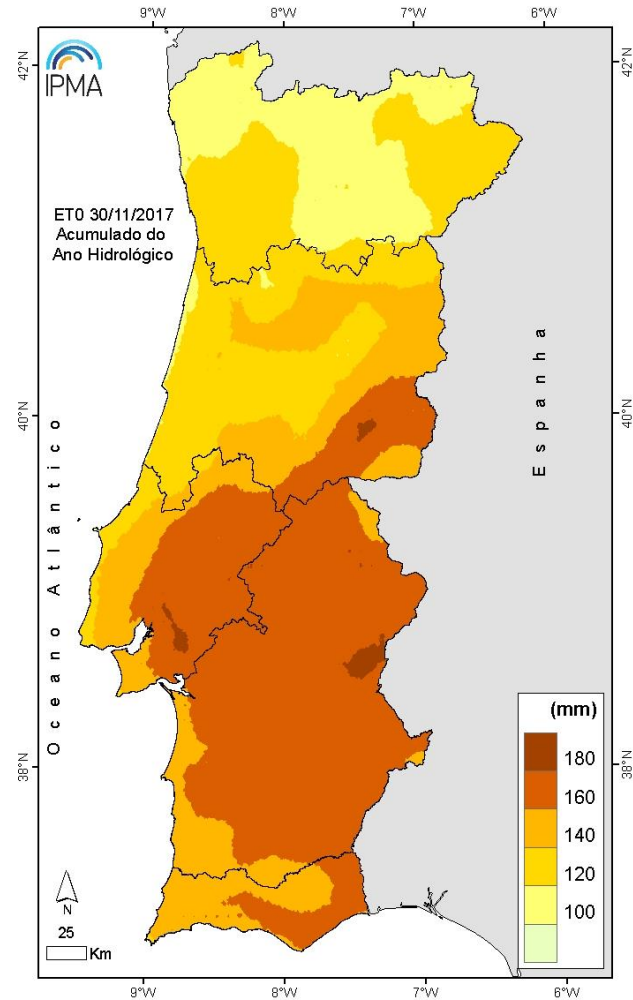


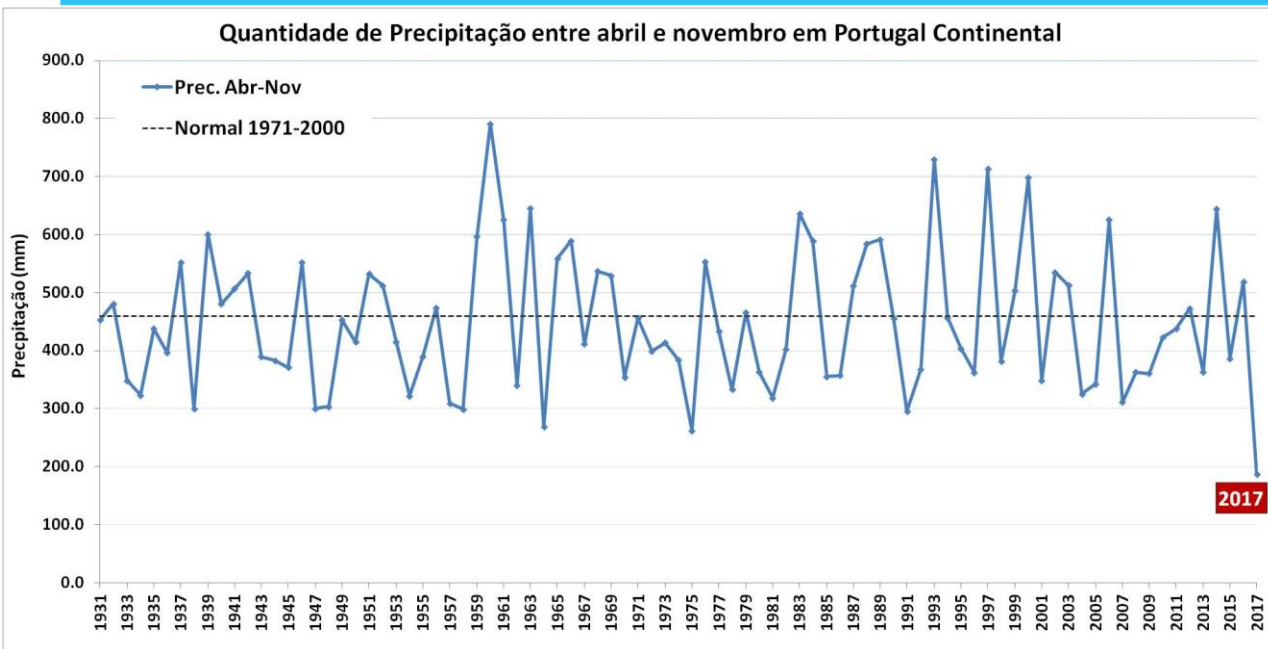
**Valores muito altos da amplitude térmica diária, superiores a 20 °C, em particular entre os dias 15 e 22 nas regiões do interior e no Alentejo**

**2016**

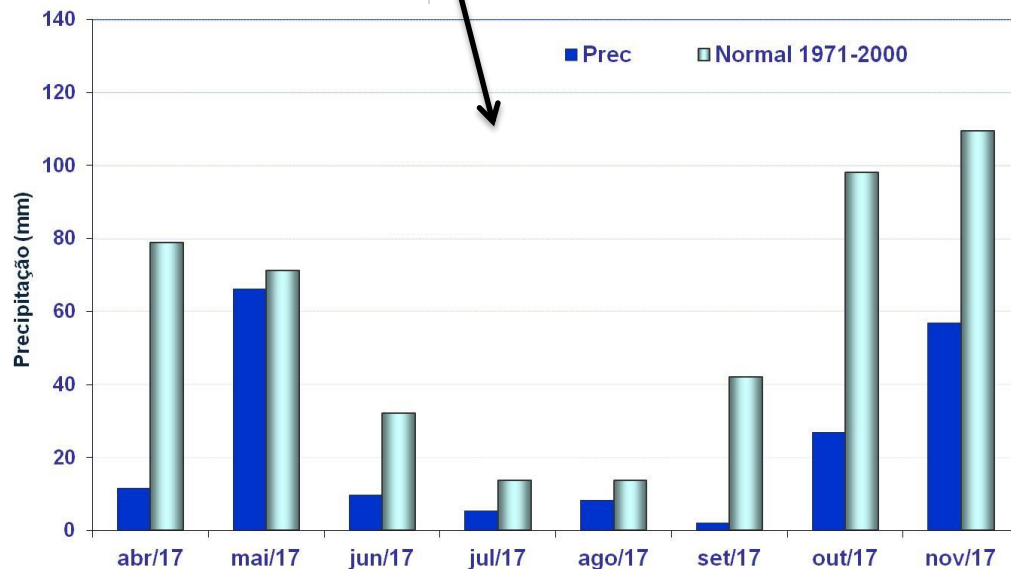


**2017**



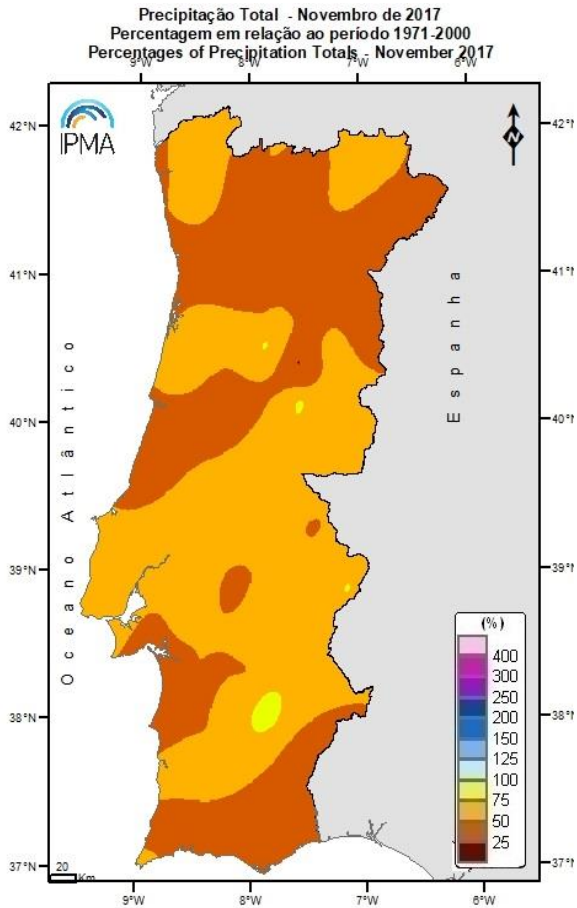


**Período de abril a novembro mais seco desde 1931**

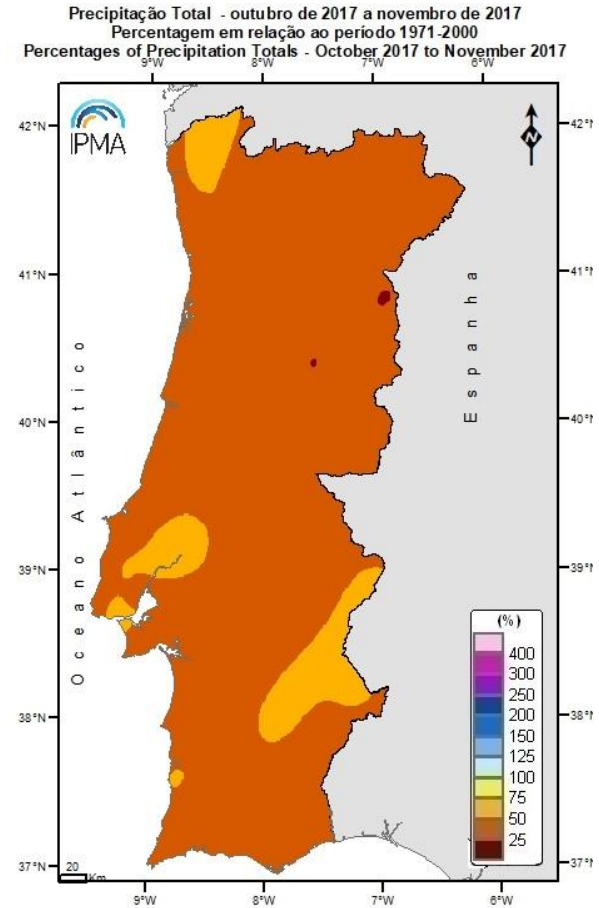


**Novembro**  
**50% Normal**

**Ano hidrológico (out - nov. 2017)**  
**40% Normal**

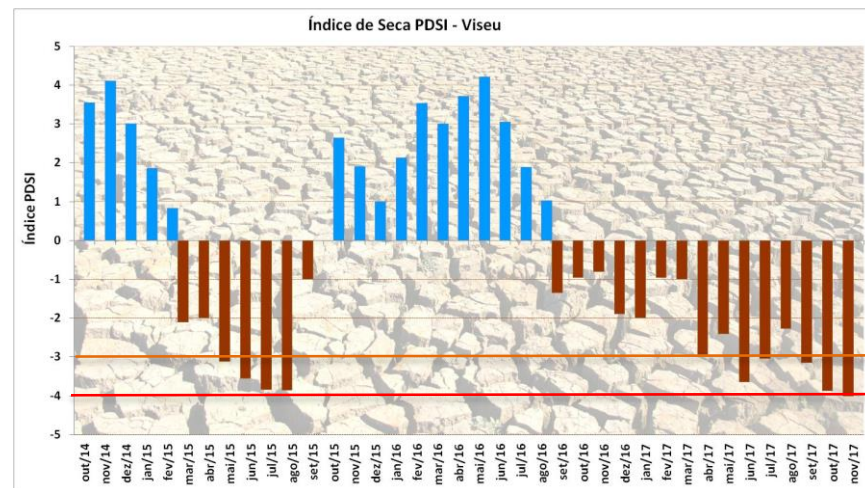
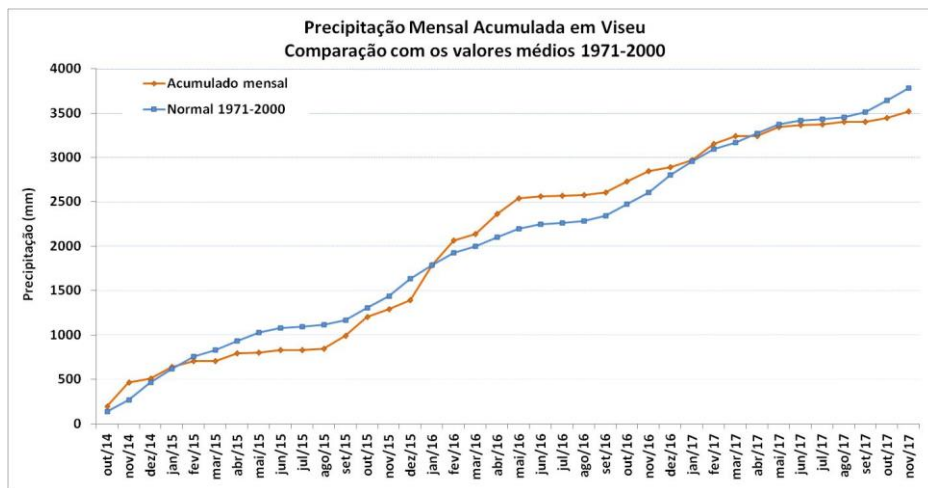
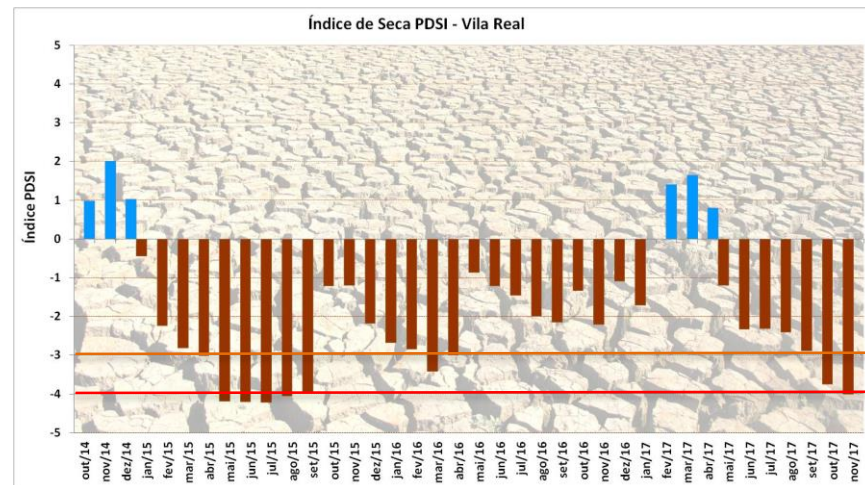
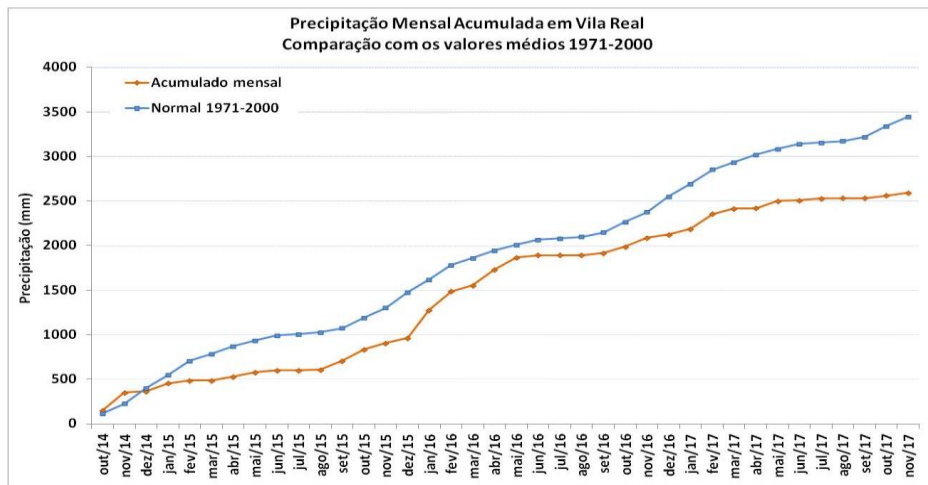


Instituto Português do Mar e da Atmosfera, 30-11-2017

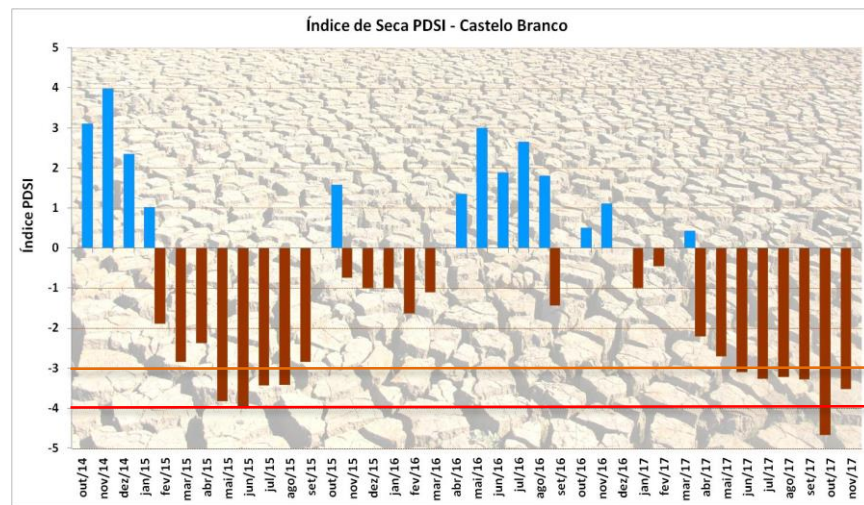
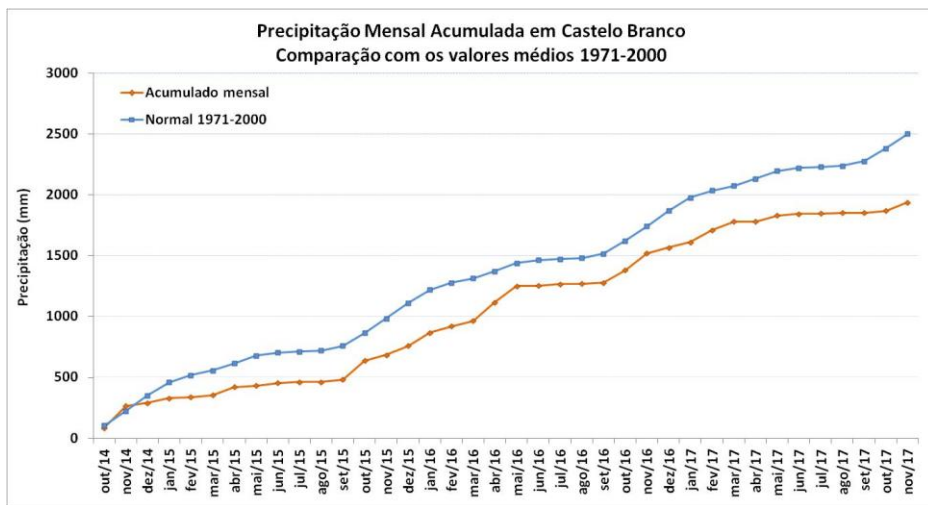
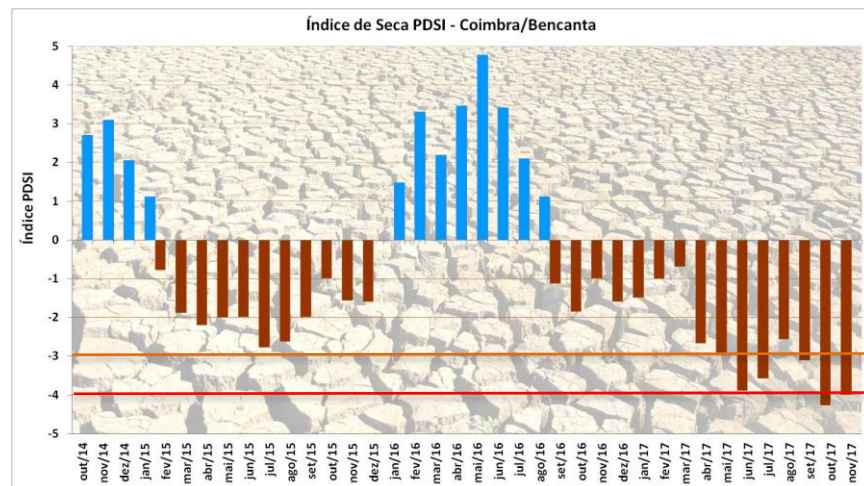
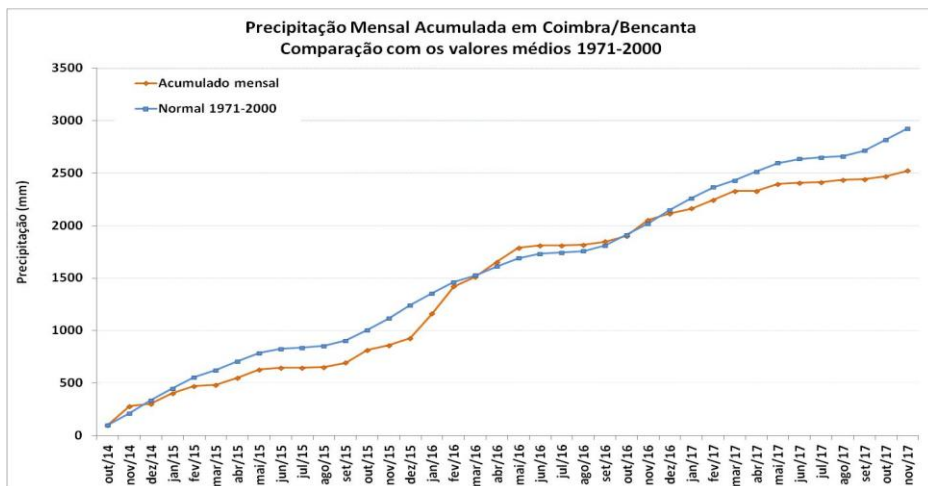


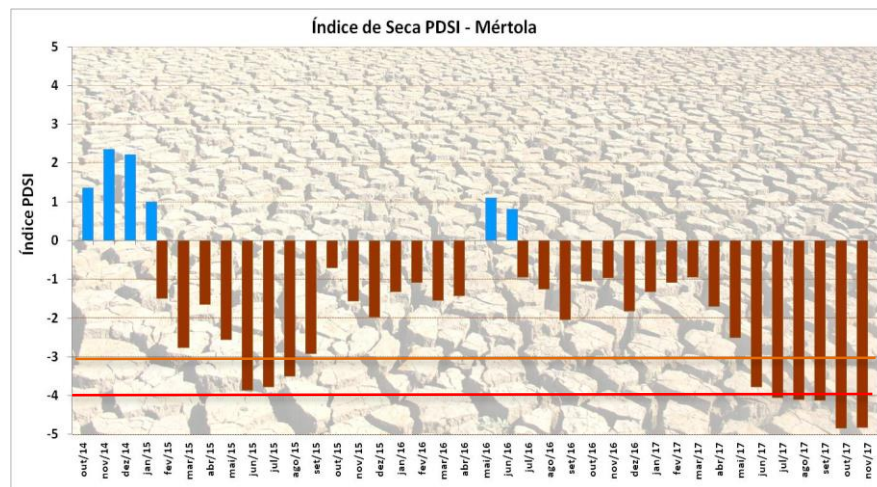
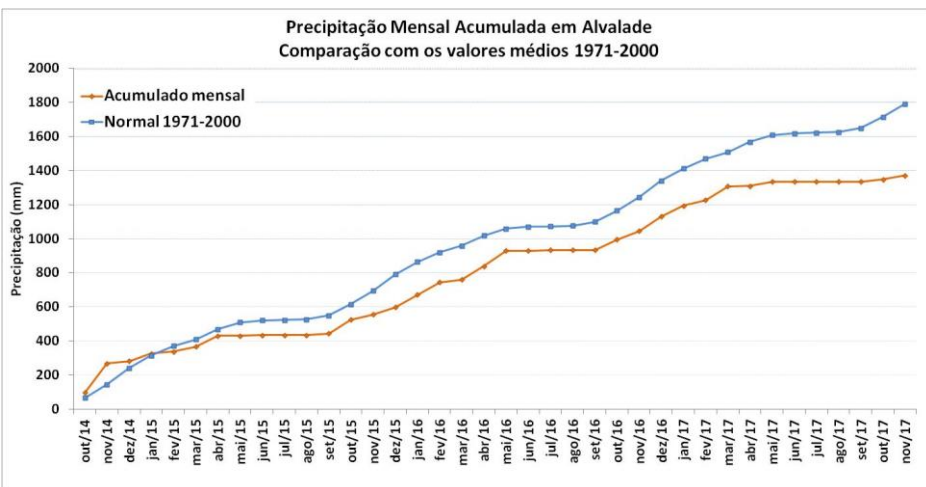
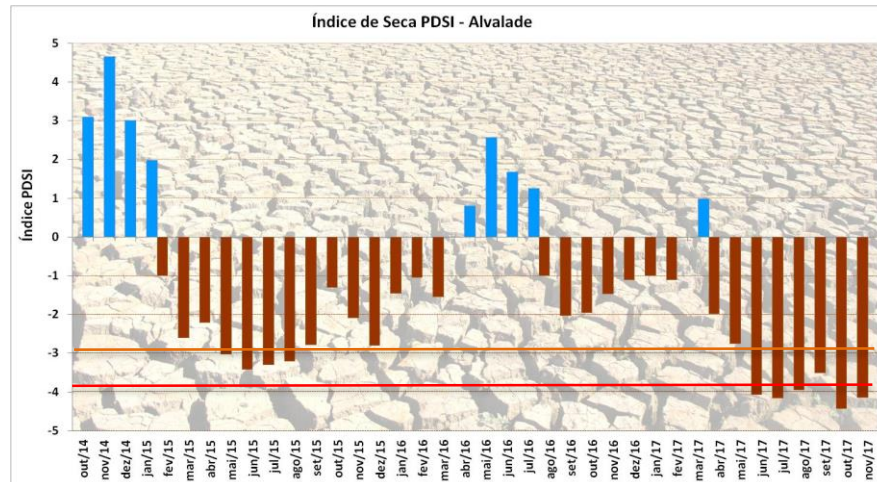
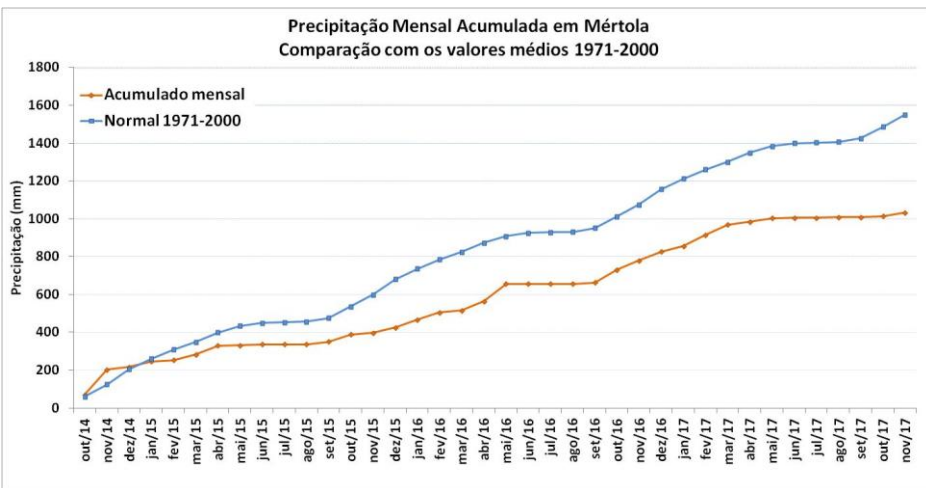
Instituto Português do Mar e da Atmosfera, 04-12-2017

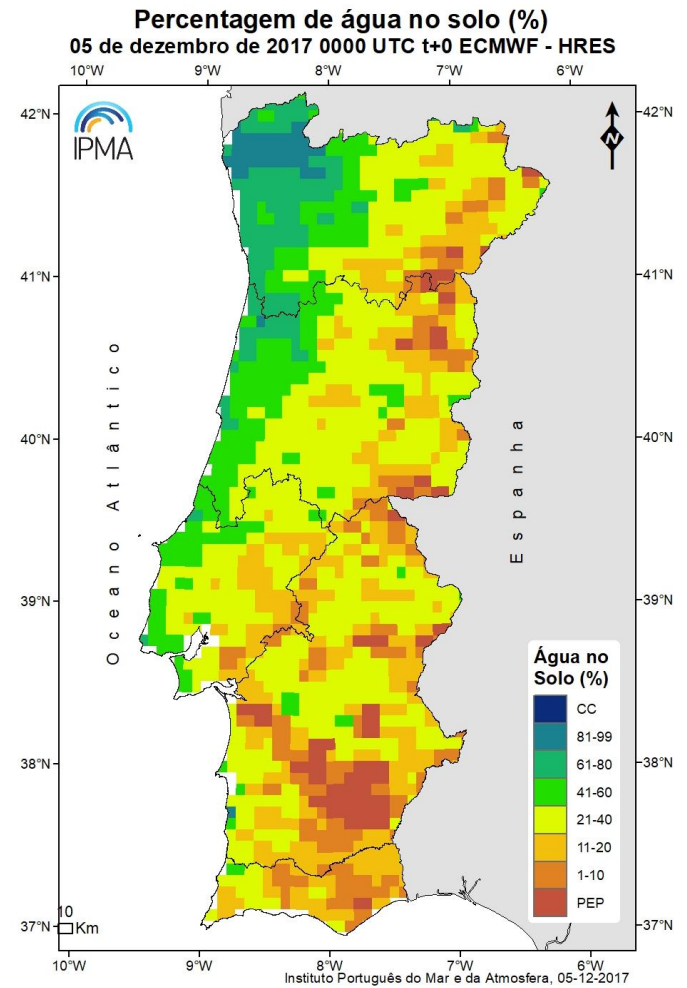
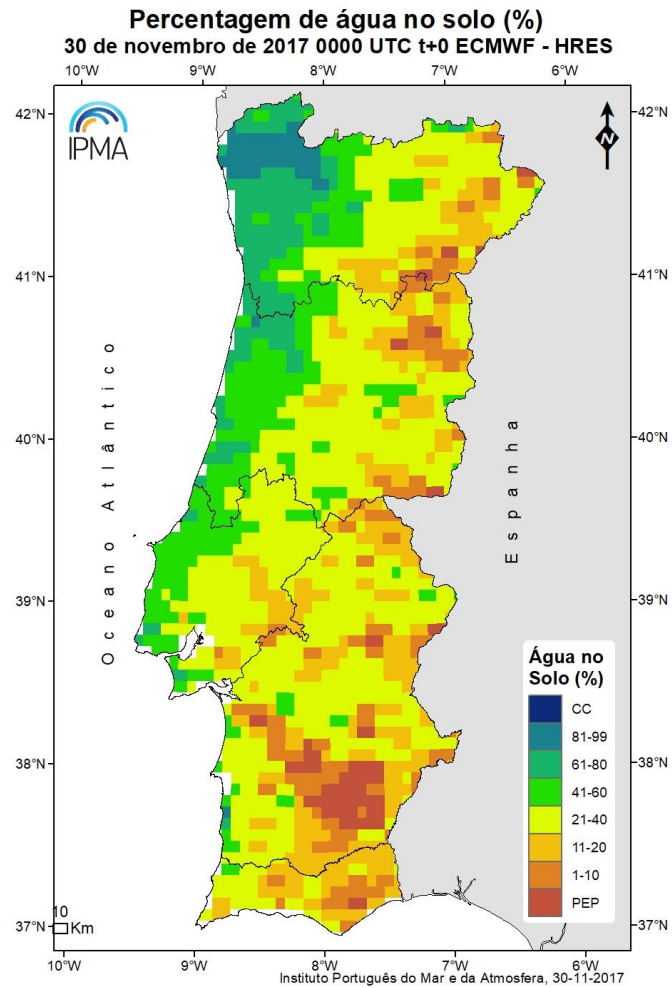






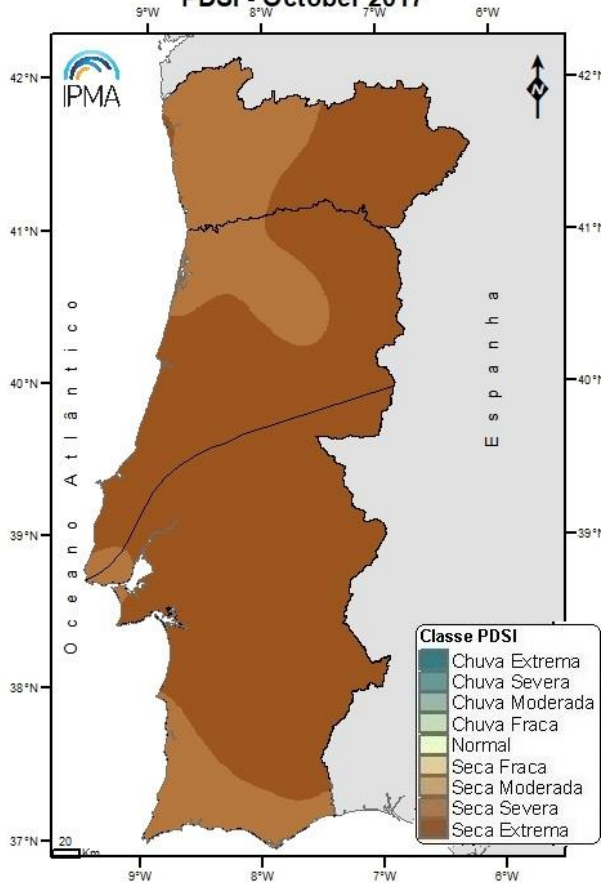








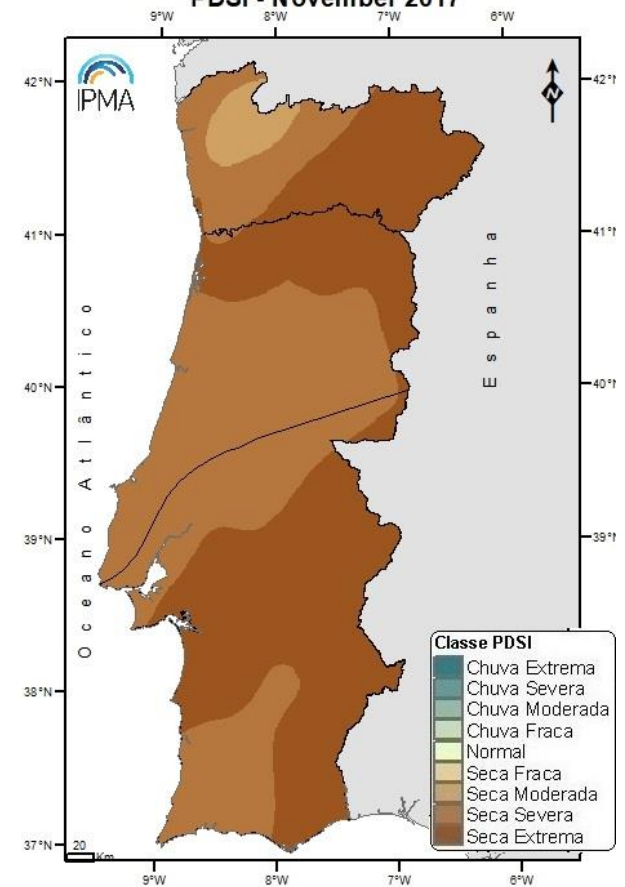
**PDSI - Outubro 2017**  
**PDSI - October 2017**



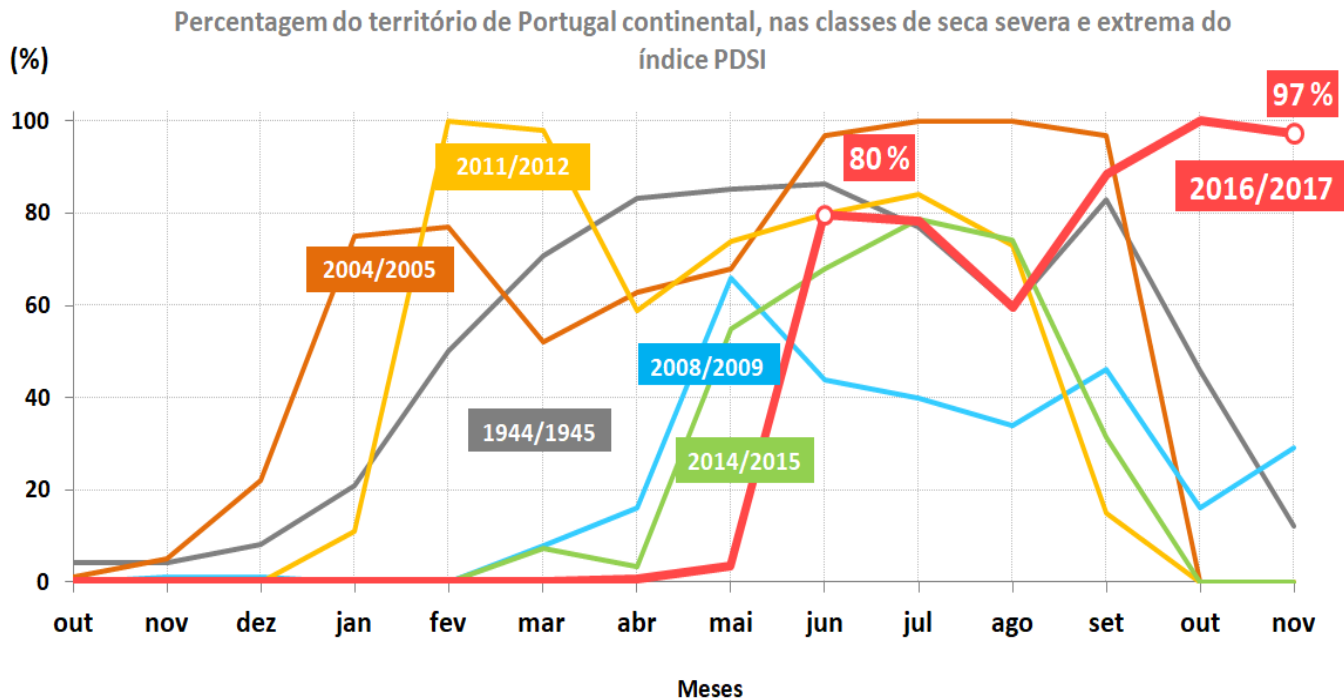
Instituto Português do Mar e da Atmosfera, 31-10-2017

Classes PDSI	Out.	Nov.
Chuva extrema	0.0	0.0
Chuva severa	0.0	0.0
Chuva moderada	0.0	0.0
Chuva fraca	0.0	0.0
Normal	0.0	0.0
Seca Fraca	0.0	0.0
Seca Moderada	0.0	2.7
<b>Seca Severa</b>	<b>24.8</b>	<b>46.8</b>
<b>Seca Extrema</b>	<b>75.2</b>	<b>50.4</b>

**PDSI - Novembro 2017**  
**PDSI - November 2017**



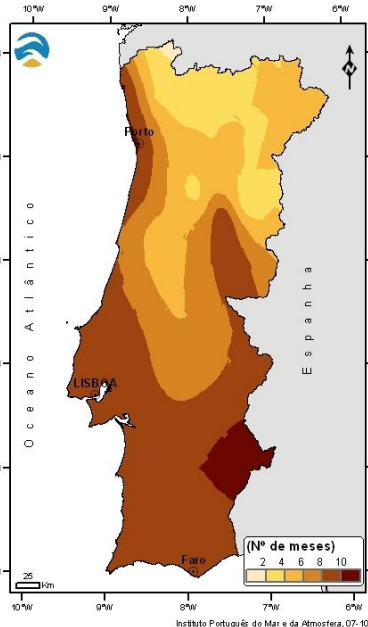
Instituto Português do Mar e da Atmosfera, 30-11-2017



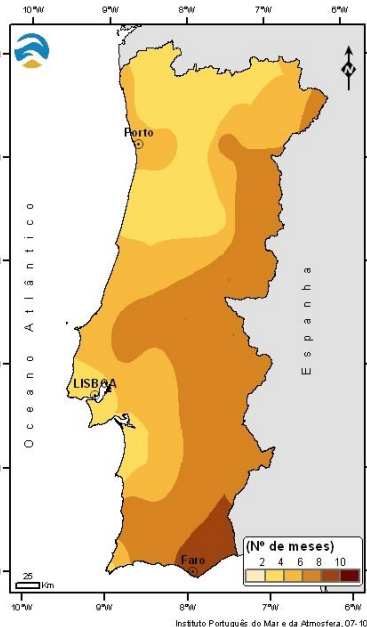
**A situação de seca de 2016/17 é a única situação que no final de novembro tem quase todo o território (97 %) nas classes de maior severidade**



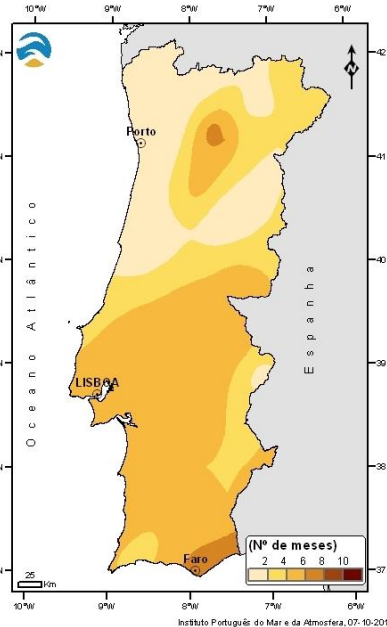
2004-06



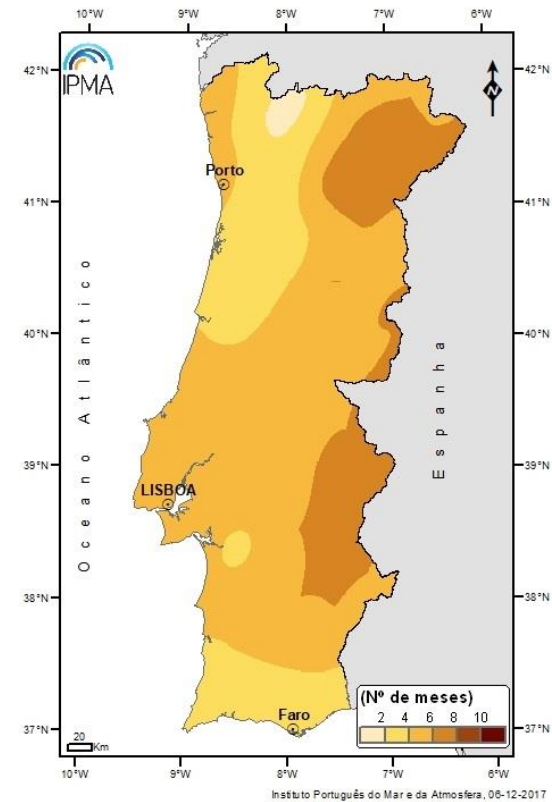
2011-12



2015

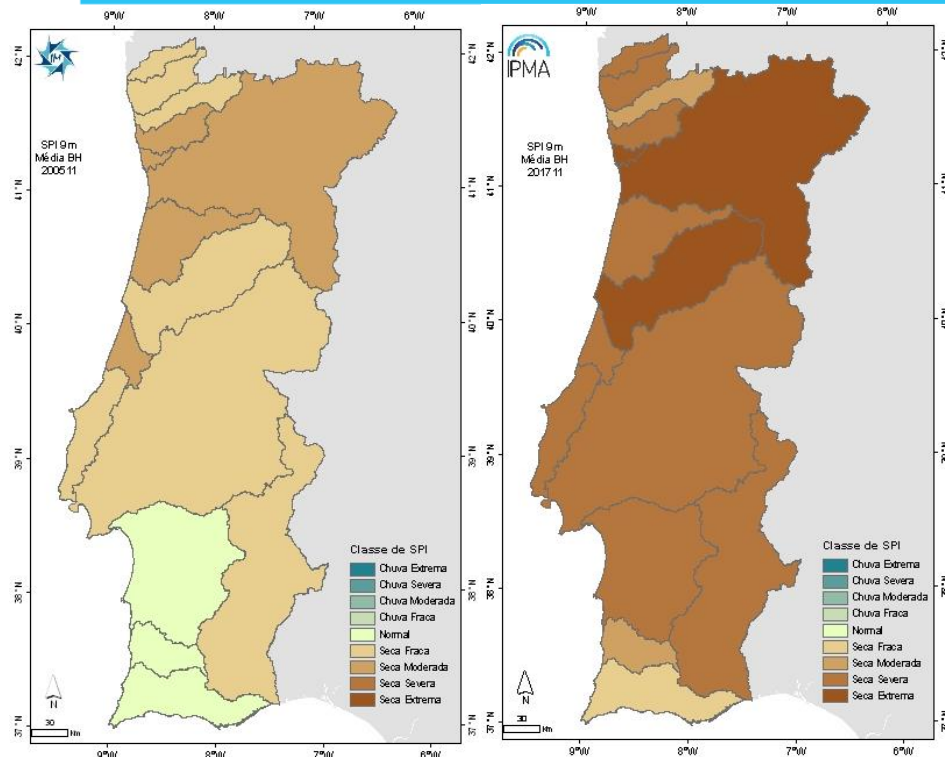


2017



**2017**  
Máximo 6/7 meses em seca severa e extrema até nov.

# Índice SPI- 9 e 12 meses 2005 e 2017

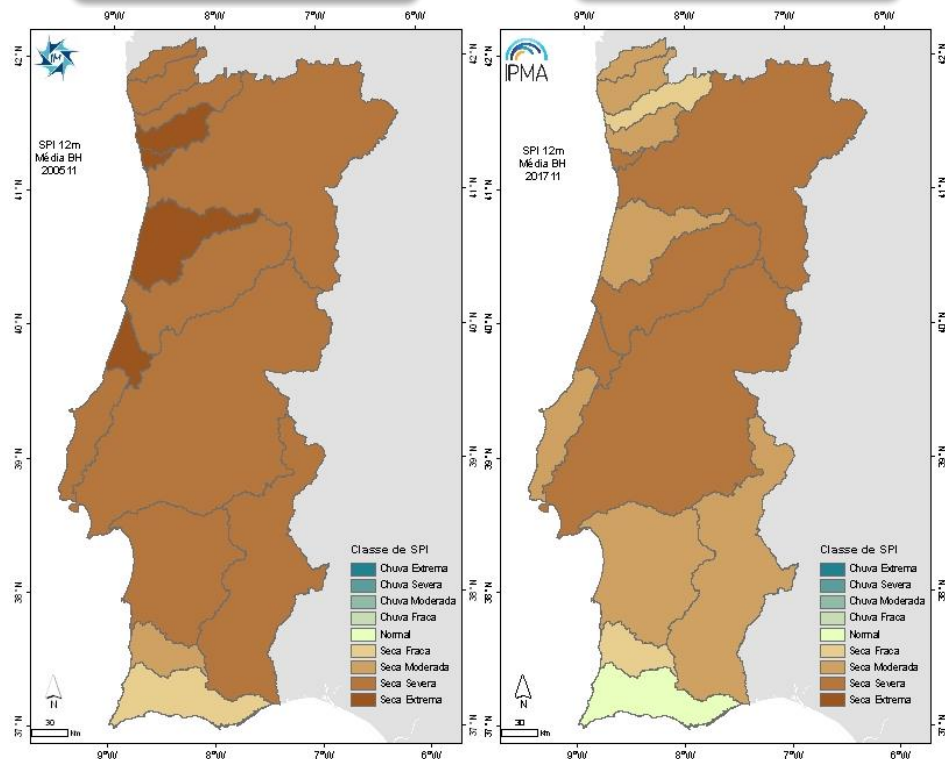


**SPI 9m - 2005**

**SPI 9m - 2017**

**SPI 12m - 2005**

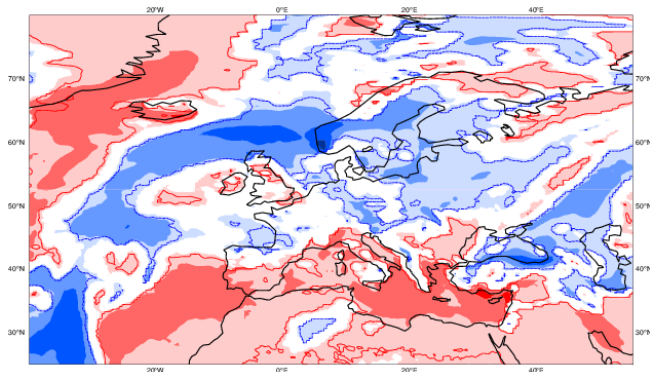
**SPI 12m - 2017**



ECMWF EPS-Monthly Forecasting System  
Precipitation anomaly  
Forecast start reference is 04-12-2017  
ensemble size = 51 ,climate size = 660

Day 1-7  
04-12-2017/TO/10-12-2017  
Shaded areas significant at 10% level  
Contours at 1% level

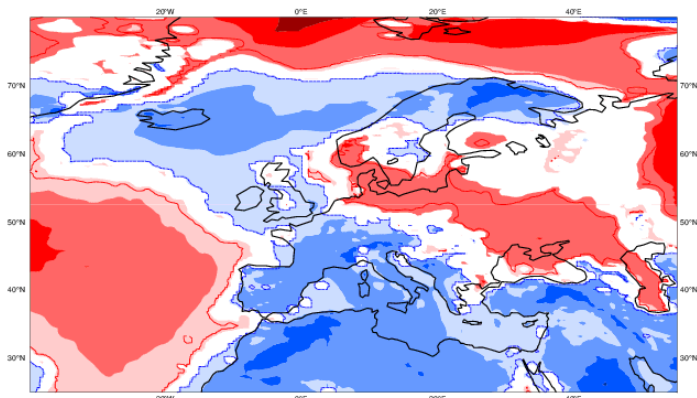
■ <-90mm ■ -90..-60 ■ -60..-30 ■ -30..-10 ■ -10.. 0 ■ 0.. 10 ■ 10.. 30 ■ 30.. 60 ■ 60.. 90 ■ > 90mm



ECMWF EPS-Monthly Forecasting System  
2-meter Temperature anomaly  
Forecast start reference is 04-12-2017  
ensemble size = 51 ,climate size = 660

Day 1-7  
04-12-2017/TO/10-12-2017  
Shaded areas significant at 10% level  
Contours at 1% level

■ <-10deg ■ -10..-6 ■ -6..-3 ■ -3..-1 ■ -1.. 0 ■ 0.. 1 ■ 1.. 3 ■ 3.. 6 ■ 6.. 10 ■ > 10deg



## Semana de 4 a 10 dez

- Precipitação  
abaixo do normal (-30 a -10 mm)
- Temperatura  
abaixo do normal (-3 a -1°C)  
Todo o Território

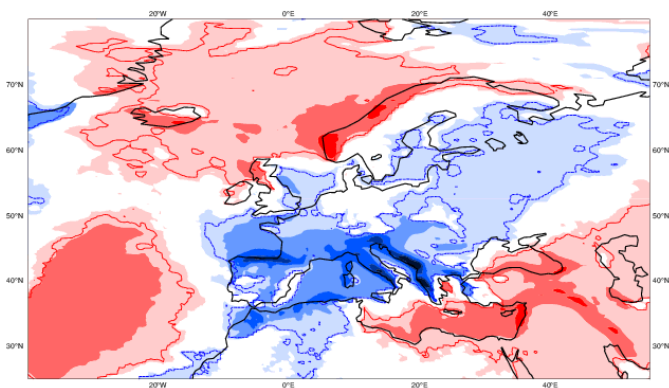
ECMWF EPS-Monthly Forecasting System

Precipitation anomaly  
Forecast start reference is 04-12-2017  
ensemble size = 51 ,climate size = 660

Day 8-14

11-12-2017/TO/17-12-2017  
Shaded areas significant at 10% level  
Contours at 1% level

■ <-90mm ■ -90..-60 ■ -60..-30 ■ -30..-10 ■ -10.. 0 ■ 0.. 10 ■ 10..30 ■ 30.. 60 ■ 60.. 90 ■ > 90mm



## Semana de 11 a 17 dez

### Precipitação

- **acima do normal** R. Norte e Centro
- **(10 a 30mm)** Minho e Douro Litoral

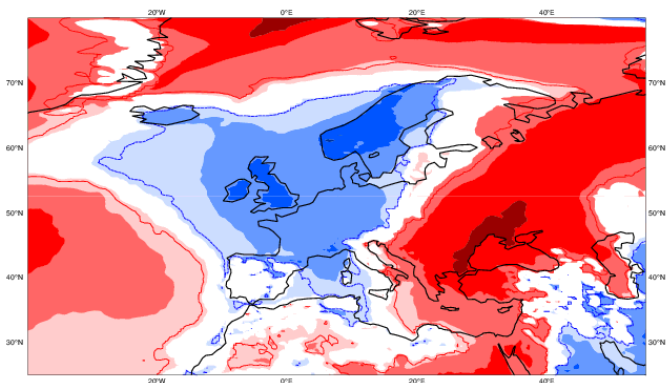
ECMWF EPS-Monthly Forecasting System

2-meter Temperature anomaly  
Forecast start reference is 04-12-2017  
ensemble size = 51 ,climate size = 660

Day 8-14

11-12-2017/TO/17-12-2017  
Shaded areas significant at 10% level  
Contours at 1% level

■ <-10deg ■ -10.. -6 ■ -6.. -3 ■ -3.. -1 ■ -1.. 0 ■ 0.. 1 ■ 1.. 3 ■ 3.. 6 ■ 6.. 10 ■ > 10deg



Cenário provável de tempo chuvoso no  
Minho e Douro Litoral e Incerteza quanto  
à Temperatura

- Temperatura **Sem Sinal**  
Todo o Território