



SC7 – – Gestão de gases com efeito de estufa e atividades relacionadas

Plenário da CT 150| 2020.01.06



Sumário

1. Enquadramento GEE
2. ISO TC 207 / SC7
3. CT 150 / SC7



1. Enquadramento GEE



1. Enquadramento GEE

Metas de longo, médio e curto prazo no que refere a emissões de GEE

- Acordo de Paris (metas 2100...)
- Compromisso de neutralidade carbónica 2050
- PNEC 2030



Acordo de Paris (metas 2100...)

Acordo de Paris, adotado em 2015, tem como objetivo limitar o aumento médio da temperatura global bem abaixo dos 2 °C (em relação ao período pré-industrial) e prosseguir esforços para **limitar o aumento médio da temperatura global a 1,5 °C**, reconhecendo que tal reduziria de forma significativa os riscos e impactes das alterações climáticas;

Neutralidade carbónica na segunda metade deste século, determinando que todas as Partes ao Acordo deverão preparar e comunicar de forma sucessiva e progressivamente mais ambiciosa as suas Contribuições Nacionalmente Determinadas (NDC) para o esforço global de redução de emissões de gases com efeito de estufa (GEE).



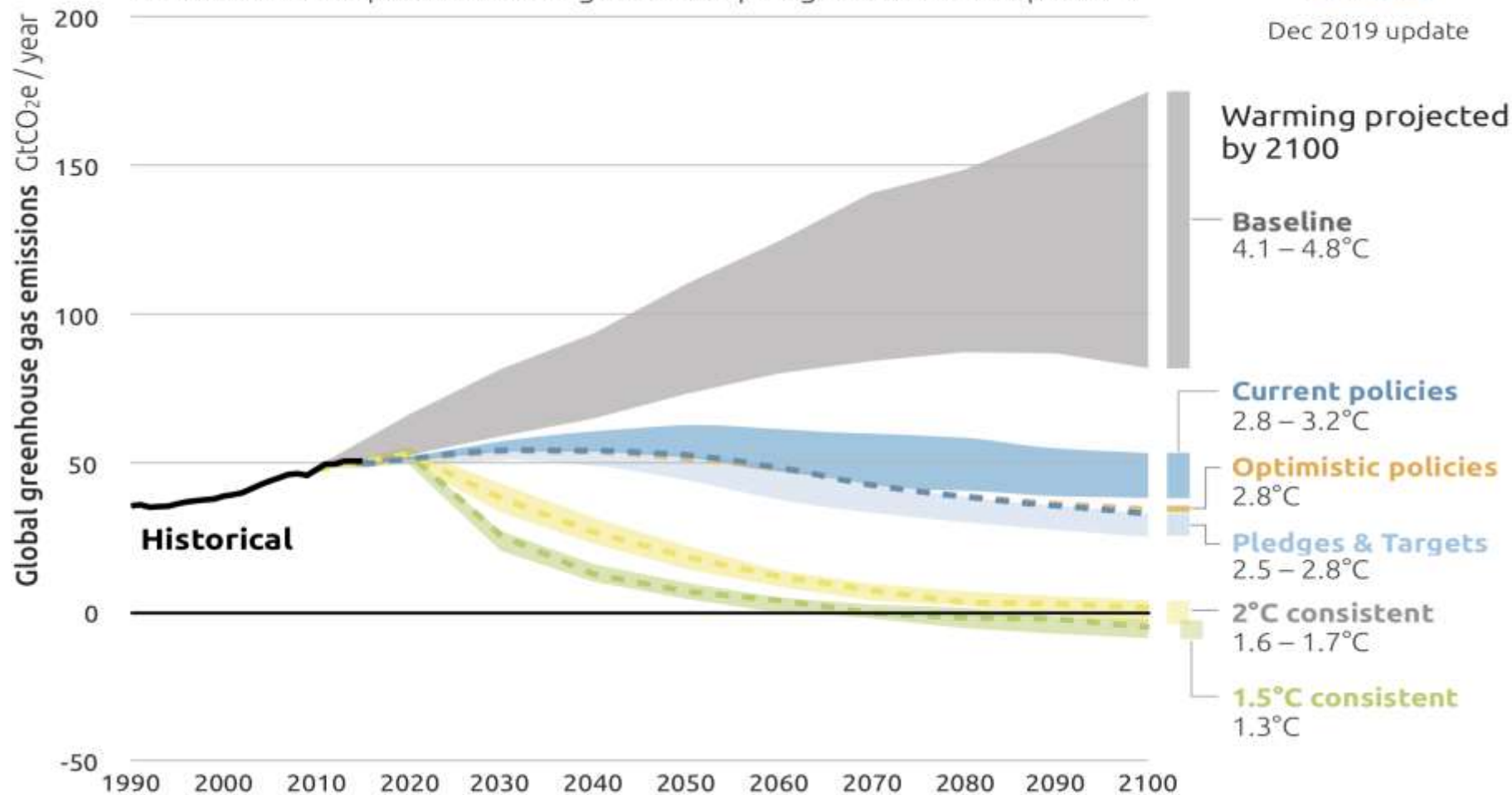
Acordo de Paris (metas 2100...)

2100 WARMING PROJECTIONS

Emissions and expected warming based on pledges and current policies



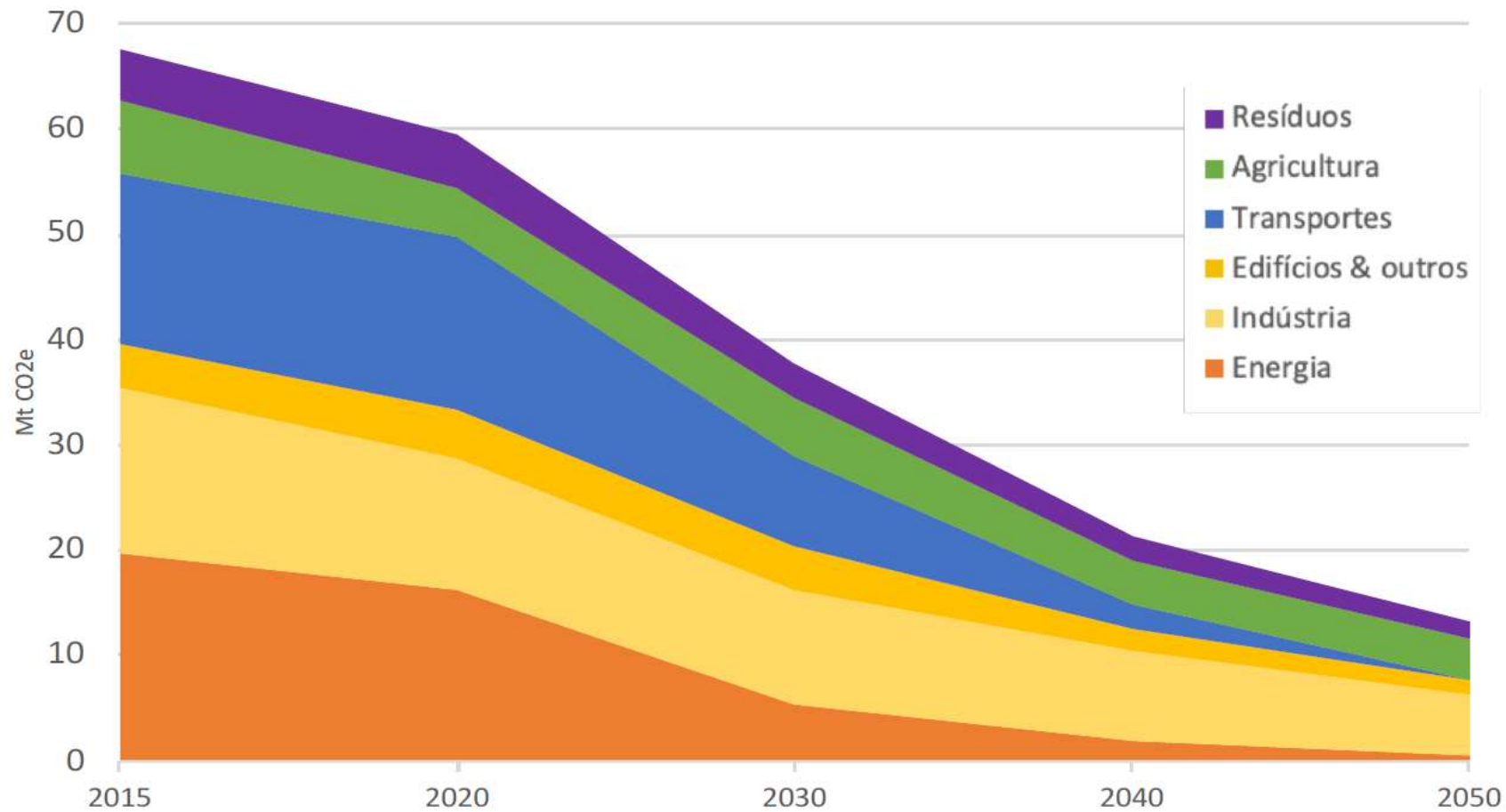
Dec 2019 update





Roteiro de neutralidade carbónica 2050 (metas 2050)

Resolução do Conselho de Ministros n.º 107/2019

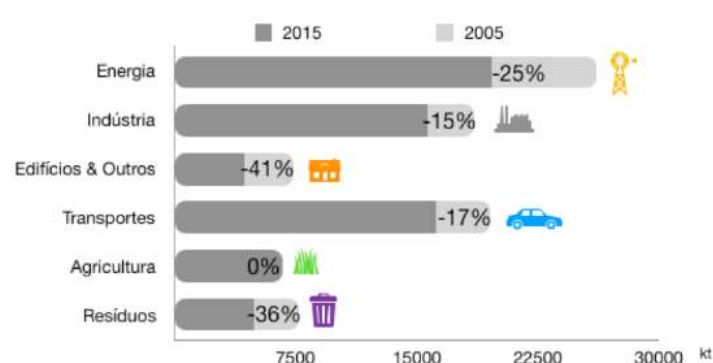
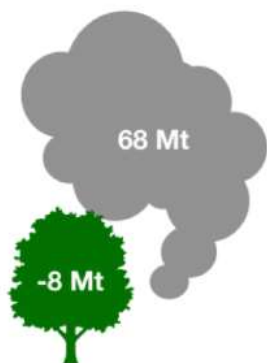




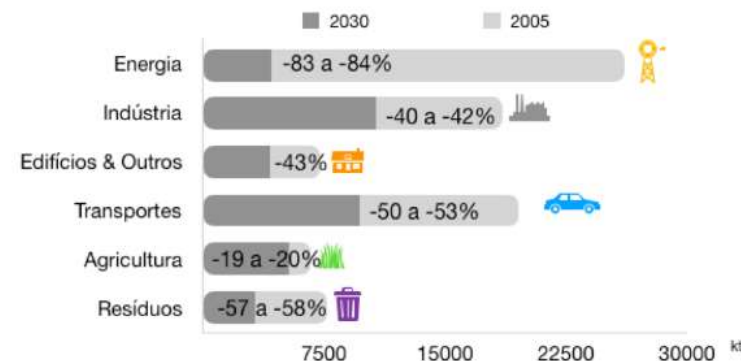
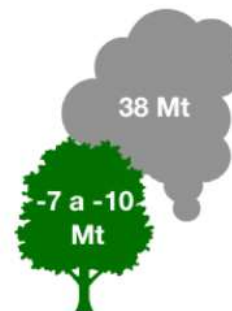
Roteiro de neutralidade carbónica 2050 (metas 2050)

Resolução do Conselho de Ministros n.º 107/2019

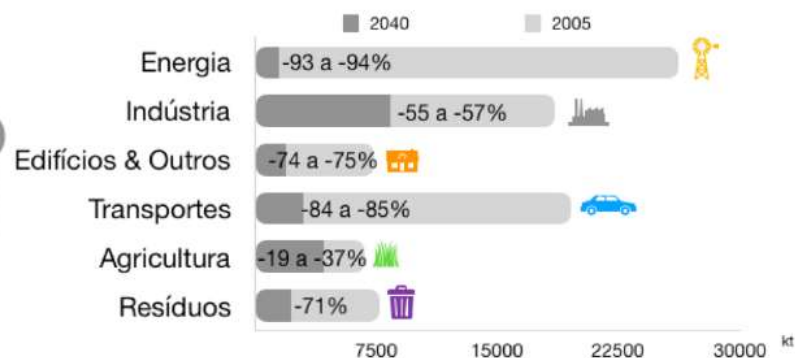
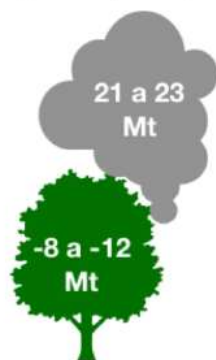
2015
-33% (/2005)



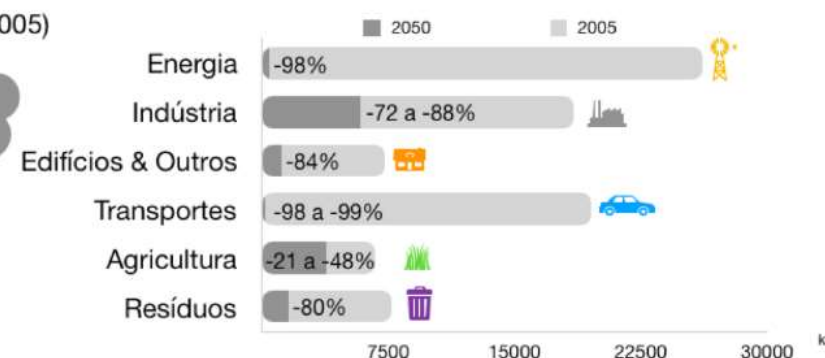
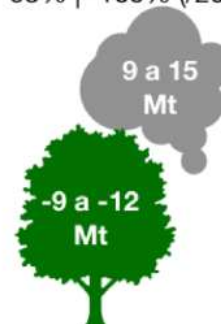
2030
-65% | -68% (/2005)



2040
-83% | -88% (/2005)



2050
- 93% | -100% (/2005)





Plano Nacional de Energia e Clima 2030 (metas 2030)

Meta de redução de emissões de CO₂eq do setor não-CELE (s\ LULUCF) face a 2005

2020	+1%
2030	-17%

2005: emissões totais de 85,82 Mt
49,39 Mt, emissões dos setores não-CELE
36,43 Mt, emissões CELE
2018: emissões totais de 67,54 Mt
41,28 Mt, emissões dos setores não-CELE
26,25 Mt, emissões CELE

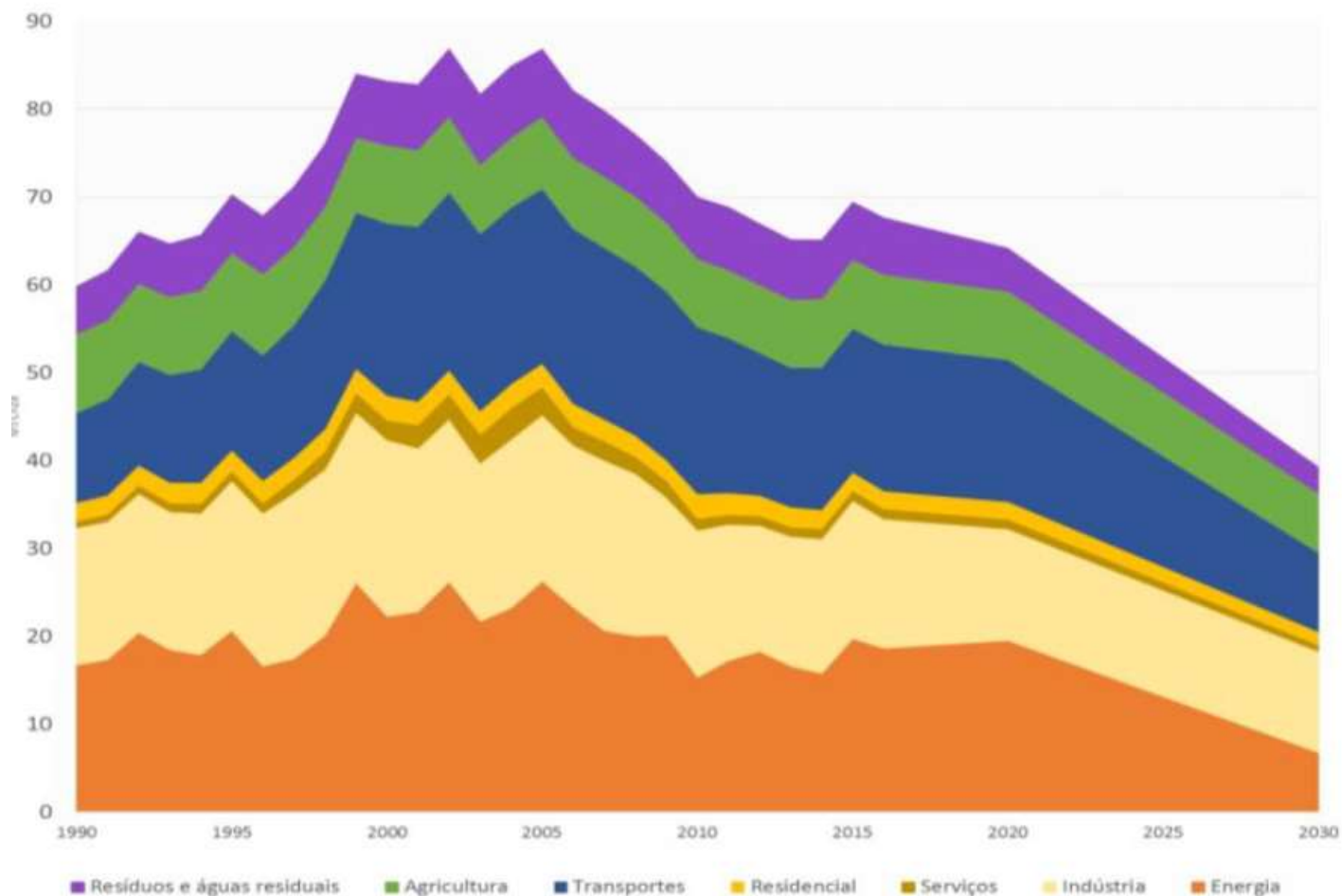
Meta nacional de redução de emissões de CO₂eq (sem LULUCF) face a 2005

2020	-18% a -23%
2030	-45% a -55%

LULUCF - uso do solo, alteração do uso do solo e florestas



Plano Nacional de Energia e Clima 2030 (metas 2030)



Evolução das emissões de gases com efeito de estufa por setor e metas de redução estabelecidas no horizonte 2030 (Mt CO₂eq)



2. ISO TC 207 / SC7



2.

ISO TC 207 / SC7



ISO/TC 207/SC 7 Greenhouse gas management and related activities

SC7's scope recognizes **mitigation and adaptation** are "two sides of the same coin".

Climate change is the single, most important agenda that we have to tackle on a global level.

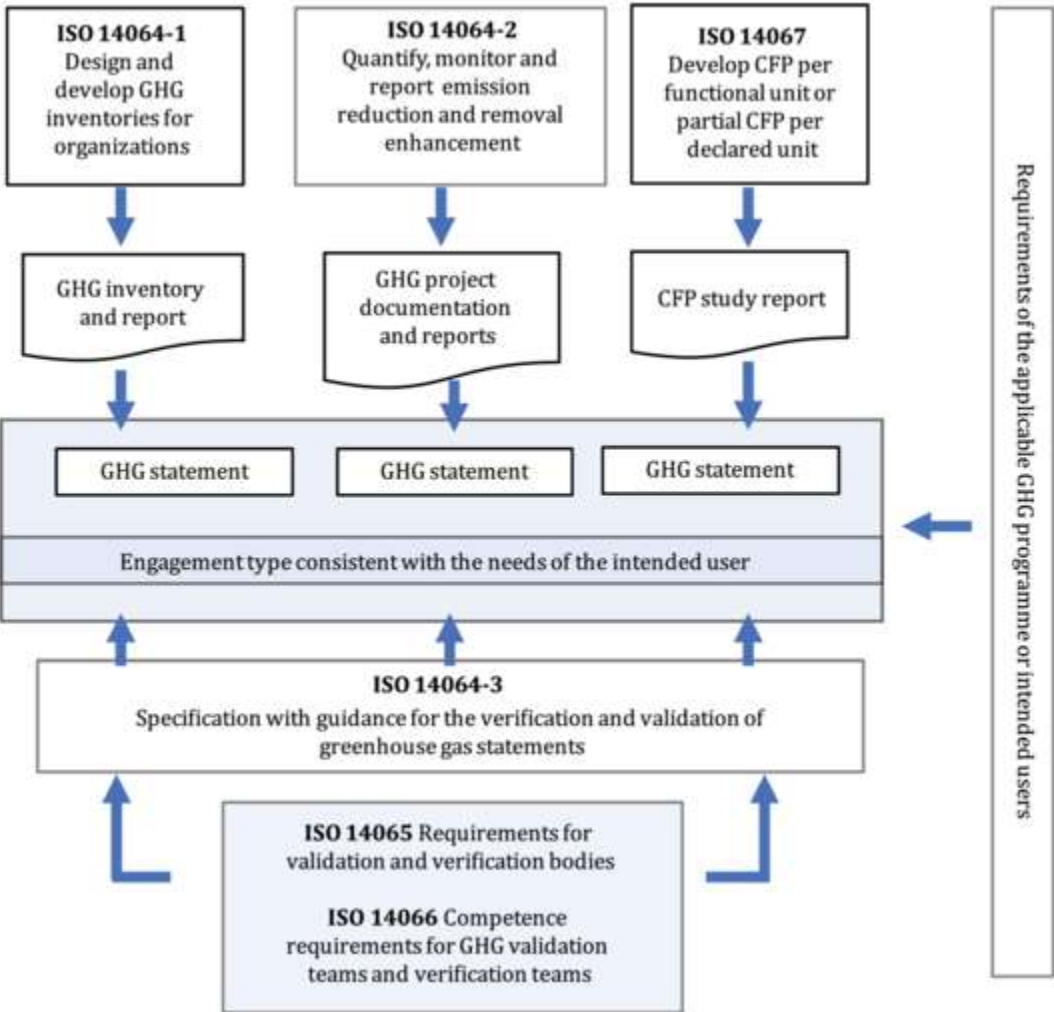
.."climate change" is a global challenge that does not respect national borders".

A little bit of history...

In 2007, ISO/TC 207 proposed the establishment of Sub Committee 7 after the publication of ISO 14064 in 2006, and ISO 14065 in 2007.



2. ISO TC 207 / SC7



Relationship among the ISO 14060 family of GHG standards



2. ISO TC 207 / SC7 “Work groups” (12)

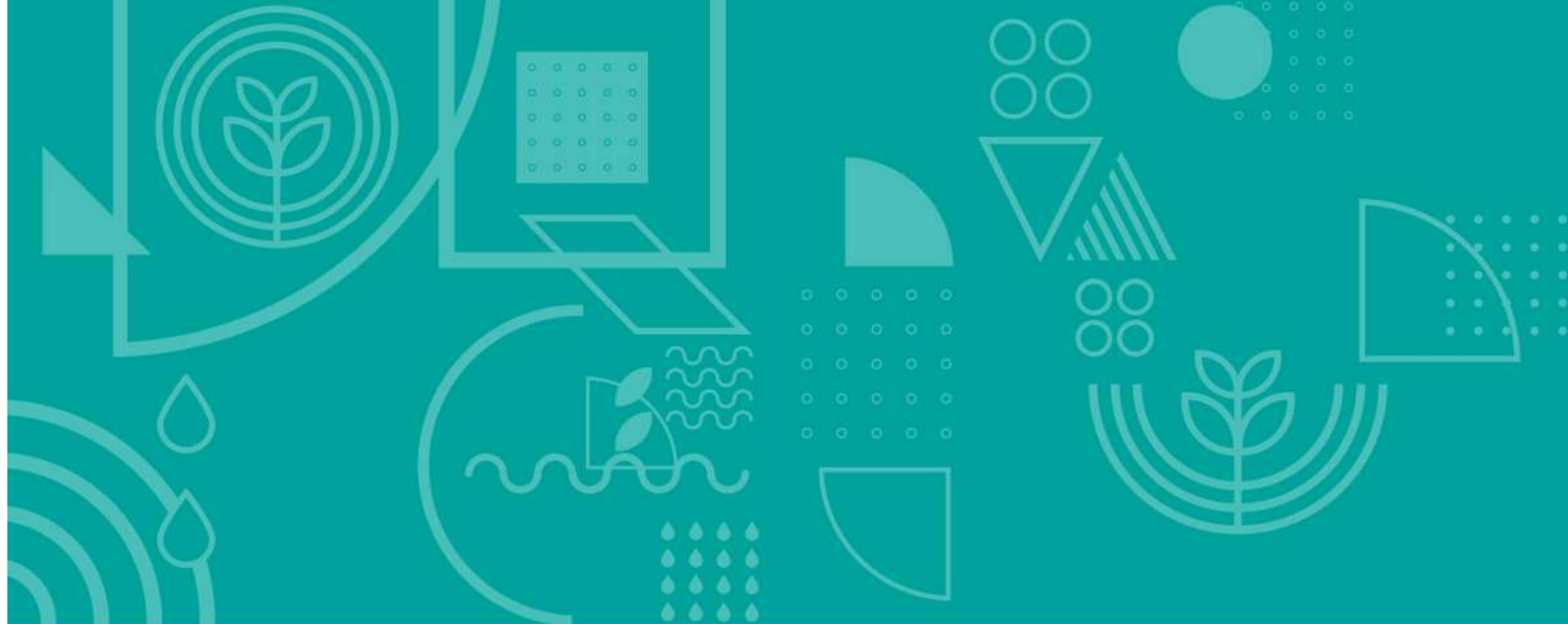
"Greenhouse gas management and related activities"	
ISO/TC 207/SC 7/JWG 1	Joint ISO/TC 207/SC 7 - ISO/TC 146/SC 1: Revision of ISO 19694-1
ISO/TC 207/SC 07/TG 01	Mitigation
ISO/TC 207/SC 07/TG 02	Adaptation
ISO/TC 207/SC 07/TG 03	Engagement and Communication
ISO/TC 207/SC 7/TG 4	Terminology Task Group
ISO/TC 207/SC 7/WG 4	Quantification and reporting of greenhouse gas emissions and removals at organizational level
ISO/TC 207/SC 7/WG 6	Joint TC 207/SC 7 - CASCO WG: Verification and validation of environmental information
ISO/TC 207/SC 7/WG 10	Investments, financing and climate change
ISO/TC 207/SC 7/WG 11	Climate change risk assessment
ISO/TC 207/SC 7/WG 12	Adaptation planning
ISO/TC 207/SC 7/WG 13	Radiative forcing management
ISO/TC 207/SC 7/WG 14	Quantification and reporting of greenhouse gas emissions of transport operations "

2. NORMAS PUBLICADAS e trabalhos (3) concluídos em 2019

	STAGE
ISO 14064-1:2018 Greenhouse gases — Part 1: Specification with guidance at the organization level for quantification and reporting of greenhouse gas emissions and removals	60.60
ISO 14064-2:2019 Greenhouse gases — Part 2: Specification with guidance at the project level for quantification, monitoring and reporting of greenhouse gas emission reductions or removal enhancements	60.60
ISO 14064-3:2019 Greenhouse gases — Part 3: Specification with guidance for the verification and validation of greenhouse gas statements	60.60
ISO 14067:2018 Greenhouse gases — Carbon footprint of products — Requirements and guidelines for quantification	60.60
ISO 14080:2018 Greenhouse gas management and related activities — Framework and principles for methodologies on climate actions	60.60
ISO 14090:2019 Adaptation to climate change — Principles, requirements and guidelines	60.60
ISO 14065:2013 Greenhouse gases — Requirements for greenhouse gas validation and verification bodies for use in accreditation or other forms of recognition	90.92
ISO/TR 14069:2013 Greenhouse gases — Quantification and reporting of greenhouse gas emissions for organizations — Guidance for the application of ISO 14064-1	90.92
ISO 14066:2011 Greenhouse gases — Competence requirements for greenhouse gas validation teams and verification teams	90.93

2. (8) Projetos da ISO/TC 207/SC 7 a decorrer

PROJECTO SOB RESPONSABILIDADE DIRETA DA ISO/TC 207/SC 7	ESTADO
ISO/DIS 14065 Greenhouse gases — Environmental information — Requirements for bodies validating and verifying environmental information	40.00
ISO/NP TR 14069 Greenhouse gases — Quantification and reporting of greenhouse gas emissions for organizations — Guidance for the application of ISO 14064-1	10.99
ISO/AWI 14082 Radiative Forcing Management— Guidance for the quantification and reporting of radiative forcing-based climate footprints and mitigation efforts	20.00
ISO/AWI 14083 Greenhouse gas management and related activities — Quantification and reporting of greenhouse gas emissions of transport operations	10.99
ISO/DIS 14091 Adaptation to climate change — Guidelines on vulnerability, impacts and risk assessment	40.20
ISO/CD TS 14092 GHG Management & related activities: requirement & guidance of adaptation planning for organizations including local governments and communities	30.60
ISO/CD 14097 Framework and principles for assessing and reporting investments and financing activities related to climate change	30.60
ISO/CD 19694-1 Stationary source emissions — Determination of greenhouse gas (GHG) emissions in energy-intensive industries — Part 1: General aspects	30.60
ISO/NP 14068 Greenhouse gas management and related activities — Carbon neutrality	10.20



3. CT 150 / SC7

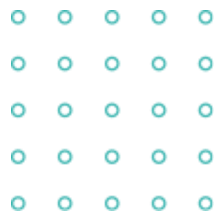




Atividades da CT 150 / SC7

Trabalho presencial em reuniões na APA e por via eletrónica:

- Acompanhamento dos trabalhos a decorrer nos grupos de trabalho da TC207/SC7 (12 grupos de trabalho em atividade);
- Votações por e-mail das propostas da TC207/SC7;
- Tradução de normas;
- Participação nos trabalhos da CT150/SC6 – vocabulário;
- Manutenção de área Google Drive para armazenamento e partilha de docs SC7;
- Manutenção de “Google Forms” para votações.



Muito obrigada pela sua atenção!

apambiente.pt

