

apa

agência portuguesa
do ambiente



Informação sobre KPI

Sessão de treino | Capacitação para uso de KPI LIFE

20 agosto 2024

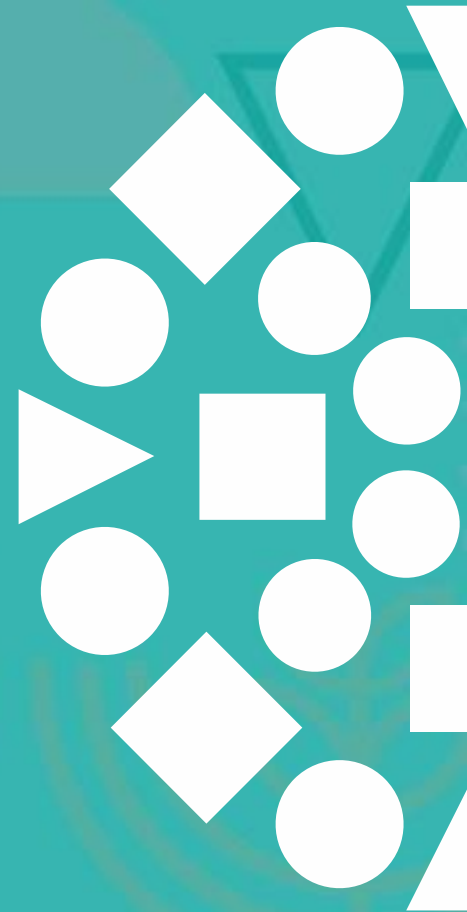
Equipa técnica LIFE CAP PT II
life.capacitacao@apambiente.pt



REPÚBLICA
PORTUGUESA

AMBIENTE E ENERGIA

Fontes de informação sobre KPI





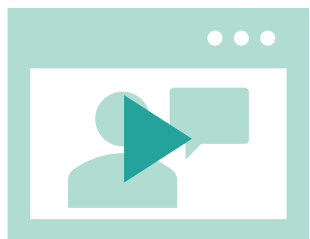
- **Documentos pdf**

KPI Database Guidance Document

Guia de acesso à *KPI webtool*

FAQ (EN | PT)

Lista de KPI aplicáveis às diferentes *calls*



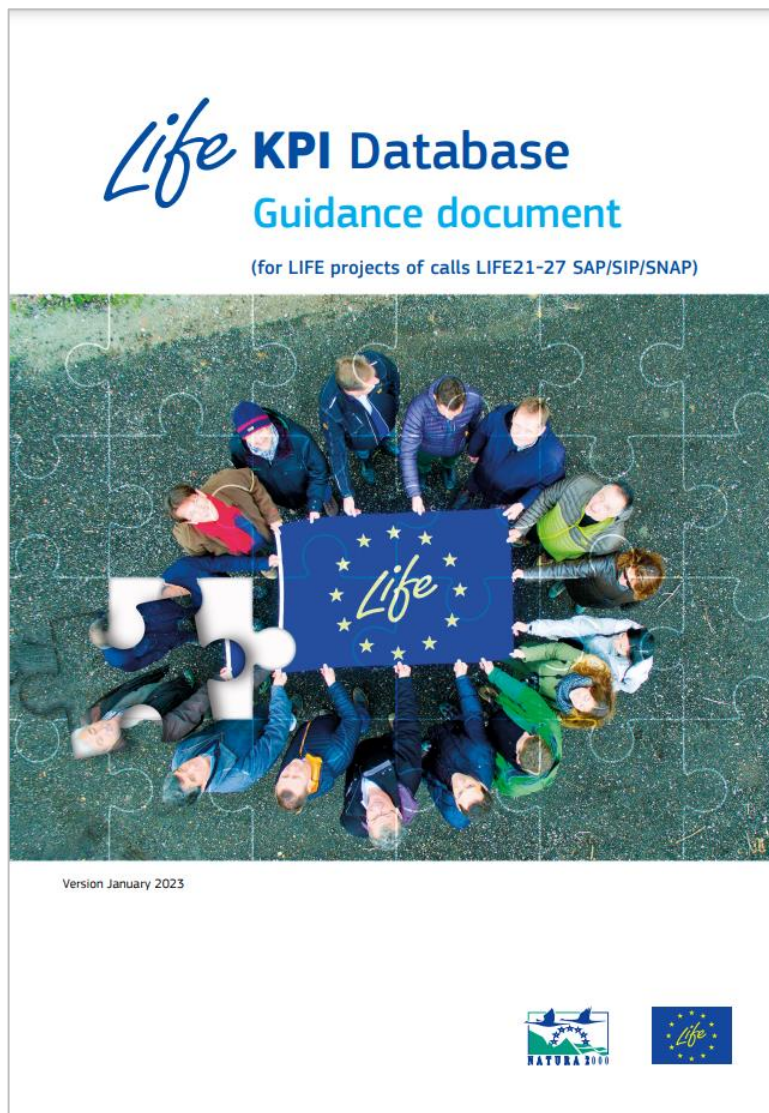
- **Vídeos CINEA**



Documentos úteis

[KPI Database Guidance Document](#) [link]

- Guia com instruções passo-a-passo para o reporte de indicadores e utilização da *KPI Database Webtool*
- Reune informação de contexto de apoio ao preenchimento dos diferentes campos (*≈ajuda online*)
- Detalha a informação necessária a reportar para cada indicador



Documentos úteis

[Guia de acesso à KPI webtool](#) [link]

- Procedimentos para aceder à *webtool*:
login e gestão de acessos

[LIFE IT helpdesk](#) (via webform)

Selecionar: 'KPI [Key Project Indicators of LIFE Projects]'



Guidance on accessing the KPI Webtool through the SMART ACCESS WIZARD



HISTORY OF CHANGES		
VERSION	PUBLICATION DATE	CHANGE
1.0	19.02.2023	Initial version



Documentos úteis

FAQ ([EN](#) | [PT](#)) [[links](#)]



FAQ ([EN](#))

Frequently Asked Questions
(last update 10/07/2024)
LIFE-2024-Calls for
Standard Action Projects (SAP)
Strategic (Integrated/Nature) Projects (SIP/SNaP)
Sub-Programmes **Nature and Biodiversity, Circular Economy and Quality of Life, and Climate Change Mitigation and Adaptation**
Project addressing ad hoc Legislative and Policy priorities (PLP)
Technical Assistance for Replication (TA-R)
Technical Assistance for Preparation of SIPs/SNaPs (TA-PP)
Operating grants (NGO-OG-FPA & NGO-OG-SGA)
(For [generic questions on submission in IT tool](#))
For questions specific to the Sub-Programme Clean Energy Transition (CET) please refer to the [following document](#)

Contents

1. Questions applicable to all Calls	3
1.1. General questions	3
1.2. Financial questions	11
1.3. Key Project-level Indicators (KPI)	16
2. Standard Action Projects (SAP)	19
2.1. Questions relevant for all SAP Calls	19
2.2. Questions relevant only for SAP Nature and Biodiversity	21

FAQ ([PT](#))

 
The LIFE CAP PT II project has received funding from the LIFE Programme of the European Union.

PERGUNTAS FREQUENTES
(última atualização: 30/01/2024)

Projetos de Ação Padrão (SAP)
Projetos Estratégicos (Integrados/Natureza) (SIP/SNaP)
Subprogramas: **Natureza e Biodiversidade, Economia Circular e Qualidade de Vida e Mitigação e Adaptação às Alterações Climáticas**
Assistência Técnica para Replicação (TA-R)

Para questões específicas ao subprograma Transição para Transição para Energias Limpas (Clean Energy Transition, CET) por favor consulte a [secção de dúvidas frequentes do Portal Funding & Tenders](#).

Índice

1. Perguntas aplicáveis a todas as Calls	3
1.1. Questões gerais	3
1.2. Questões financeiras	12
1.3. Principais indicadores a nível de projeto (Key Project-level Indicators, KPI)	17
2. Projetos de ação normalizados (Standard Action Projects, SAP)	20
2.1. Questões relevantes para todas as Calls SAP	20
2.2. Perguntas relevantes apenas para SAP Natureza e Biodiversidade	22
2.3. Questões relevantes apenas para SAP Economia Circular e Qualidade de Vida	26
2.4. Economia circular e qualidade de vida - Técnico 3 - New European Bauhaus	26



Lista de KPI aplicáveis às diferentes *calls* [\[link\]](#)

- KPI comuns a todas as *calls*
- KPI aplicáveis a SAP/SIP/SNAP
- KPI aplicáveis a CET

Common KPIs applicable to all LIFE Call proposals

Innovation

Is your project proposal developing, demonstrating and promoting innovative techniques and approaches?

Yes Check box
No Check box

Governance

Is your project proposal improving governance through enhancing capacities of public and private actors and the involvement of civil society?

Yes Check box
No Check box

Plans & strategies

Is your project proposal implementing key plans or strategies?

Yes Check box
No Check box

Catalytic effect - Financial

Will your project trigger additional investments?

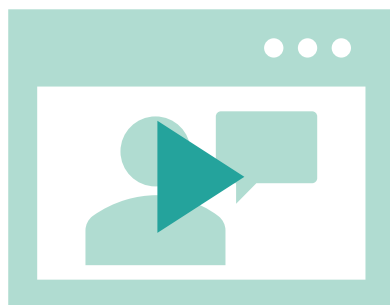
Yes Check box
No Check box

Catalytic effect - Societal

Will your project :

a) Contribute to the development of new or existing national legislation, policies, regulations,





- ***LIFE 22 projects - Impact KPIs and Q&A*** (03/10/2023)
- ***LIFE impact KPIs and Q&A*** (04/10/2022)
- ***Info Session on LIFE-CET KPIs*** (22/02/2024)

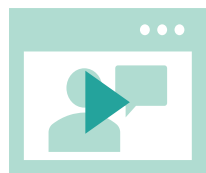
- **Vídeos explicativos / tutoriais *KPI Webtool* (2022):**
 - Module 1: Accessing to the KPI Database*
 - Module 2: The KPI process and project status*
 - Module 3: Navigating through the KPI Database*
 - Module 4a: Selecting overarching contexts*
 - Module 4b: Creating specific context*
 - Module 5: Filling in the indicators*



KPI em Projetos Estratégicos (SIP/SNAP)



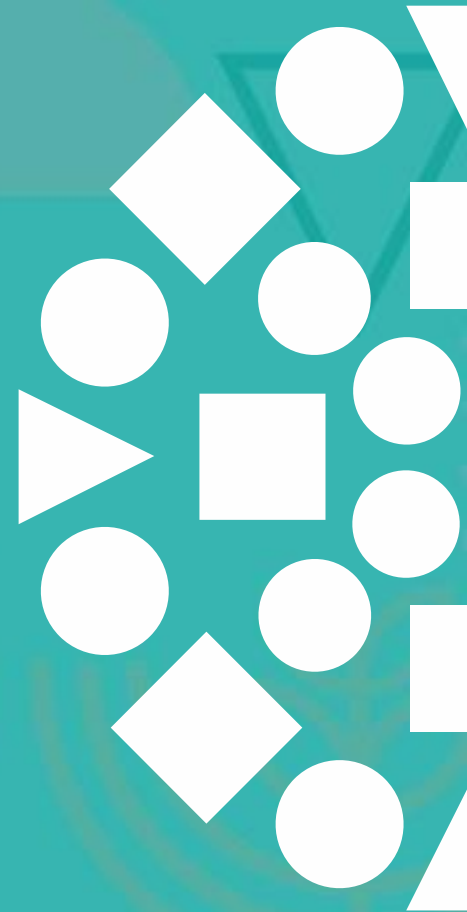
- [Complementary short guide .pdf](#)



- [Webinar 'KPIs for Integrated Projects'](#) (March 2021)



Contactos e websites LIFE



▪ CONTACTOS

214 709 921 | 214 721 455 | 214 709 951

life@apambiente.pt

▪ MAIS INFO



Site dedicado LIFE PT

<https://life.apambiente.pt/>

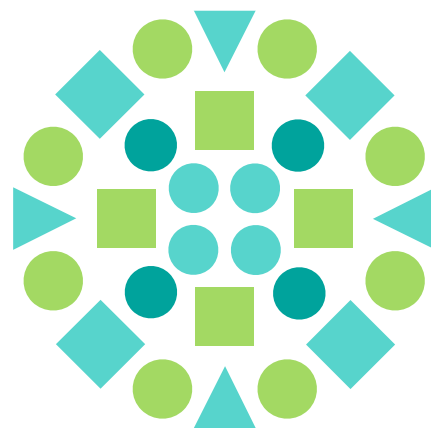
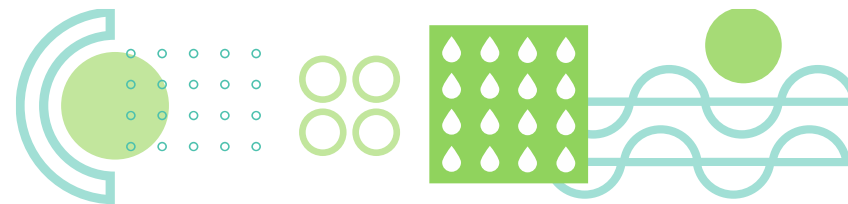
Site dedicado LIFE EU | CINEA

https://cinea.ec.europa.eu/life_pt

Plataforma para candidatura | *Funding & tender opportunities*

<https://ec.europa.eu/info/funding-tenders/opportunities/portal/screen/home>





apa

agência portuguesa
do ambiente

OBRIGADA

apambiente.pt

