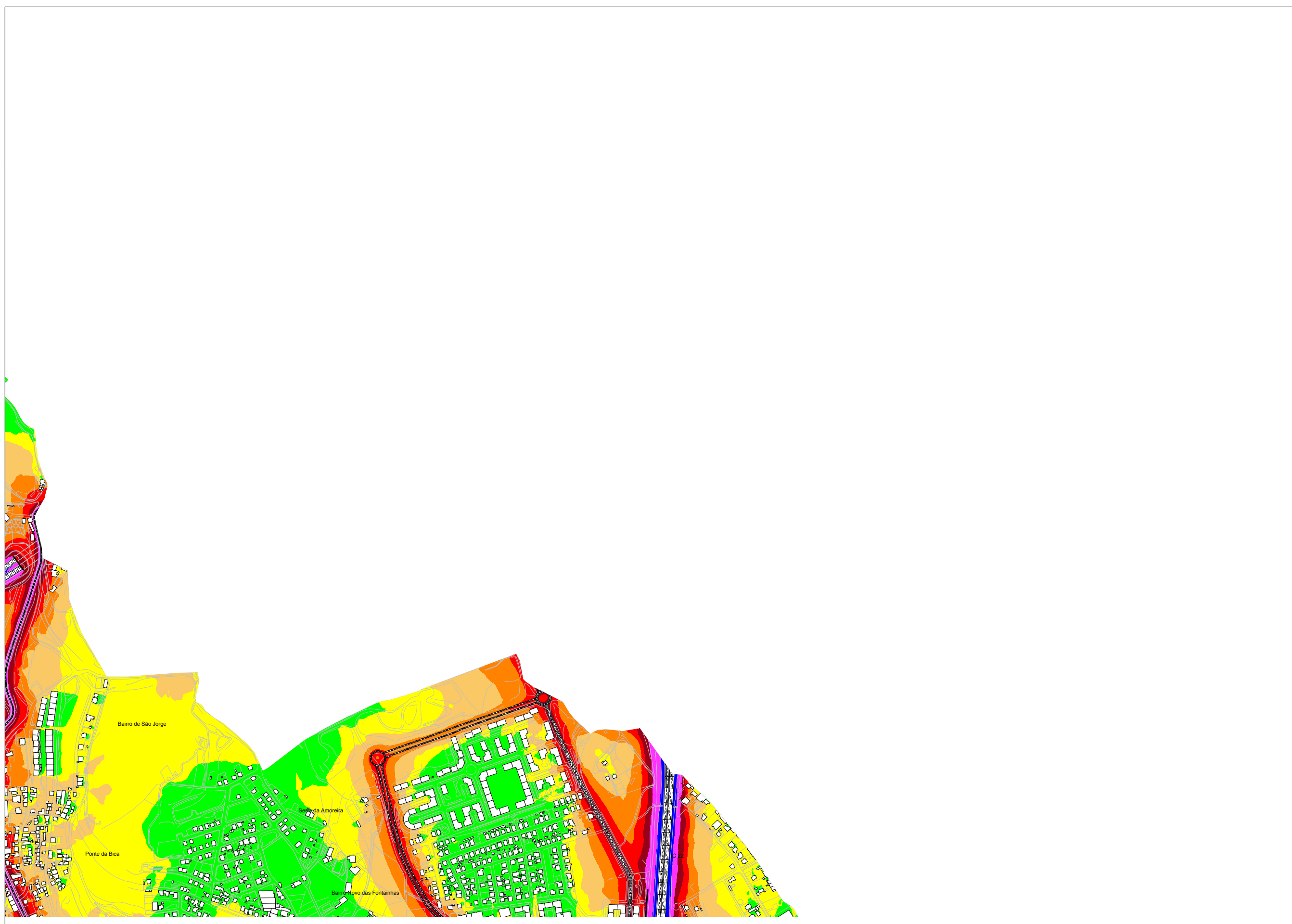
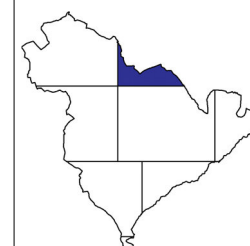


Lden dB(A)

- < 45.0 dB
- > 45.0 dB
- > 50.0 dB
- > 55.0 dB
- > 60.0 dB
- > 65.0 dB
- > 70.0 dB
- > 75.0 dB

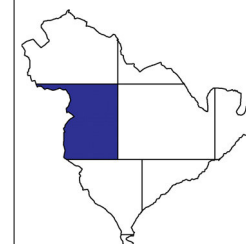
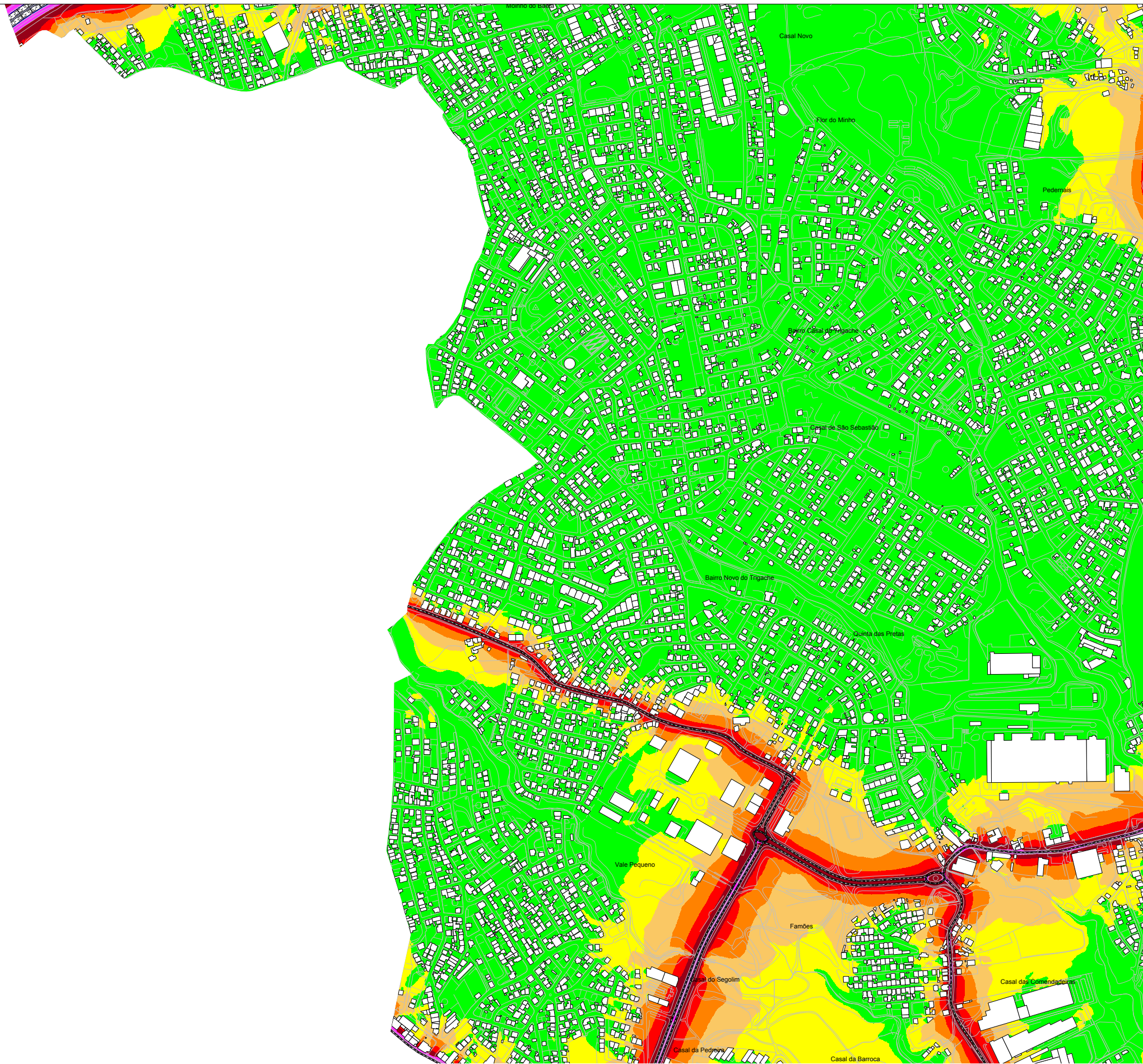




Lden dB(A)

- < 45.0 dB
- > 45.0 dB
- > 50.0 dB
- > 55.0 dB
- > 60.0 dB
- > 65.0 dB
- > 70.0 dB
- > 75.0 dB

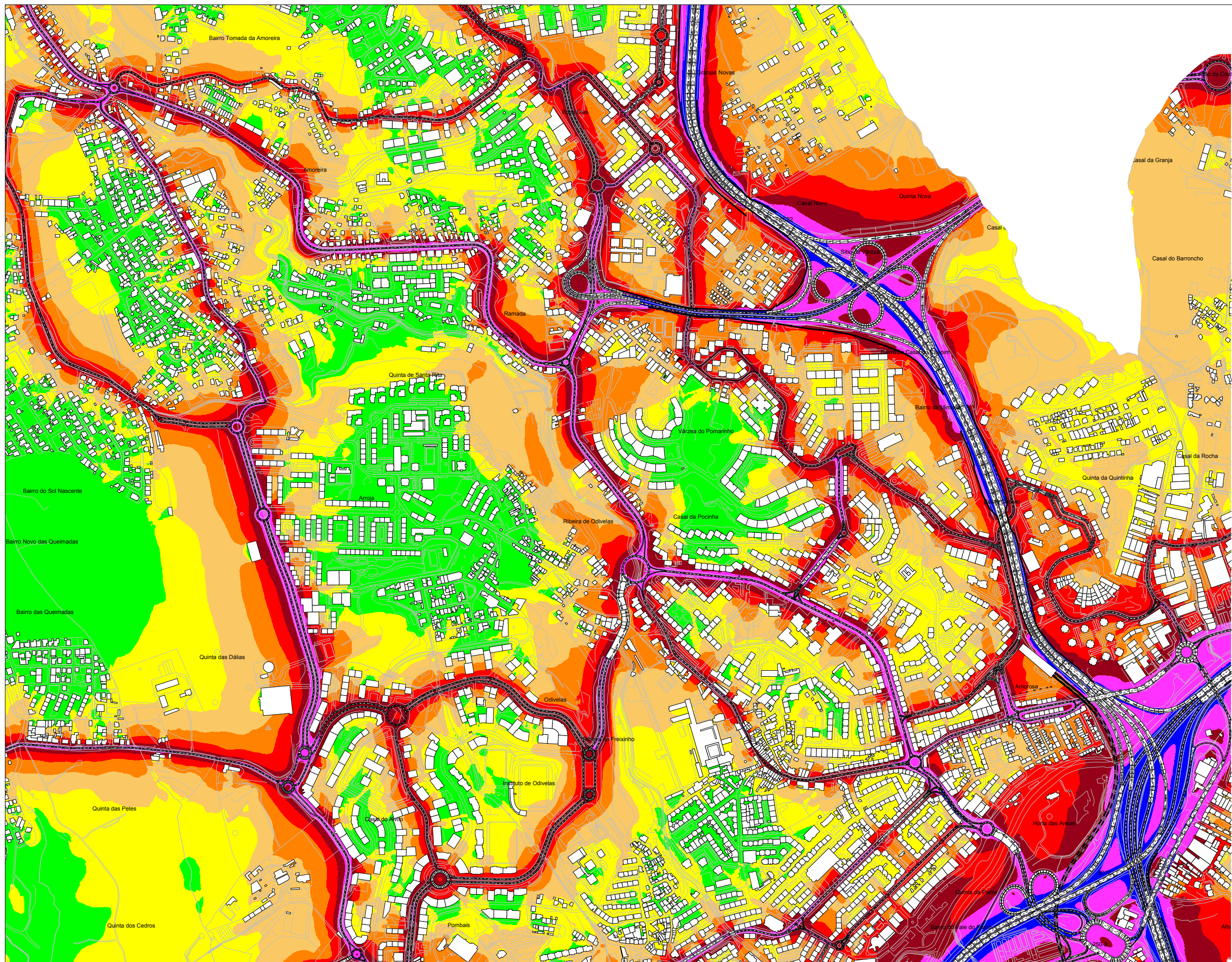




Lden dB(A)

- < 45.0 dB
- > 45.0 dB
- > 50.0 dB
- > 55.0 dB
- > 60.0 dB
- > 65.0 dB
- > 70.0 dB
- > 75.0 dB

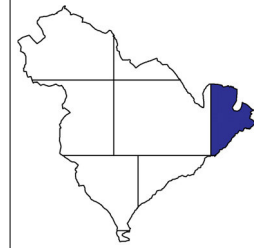
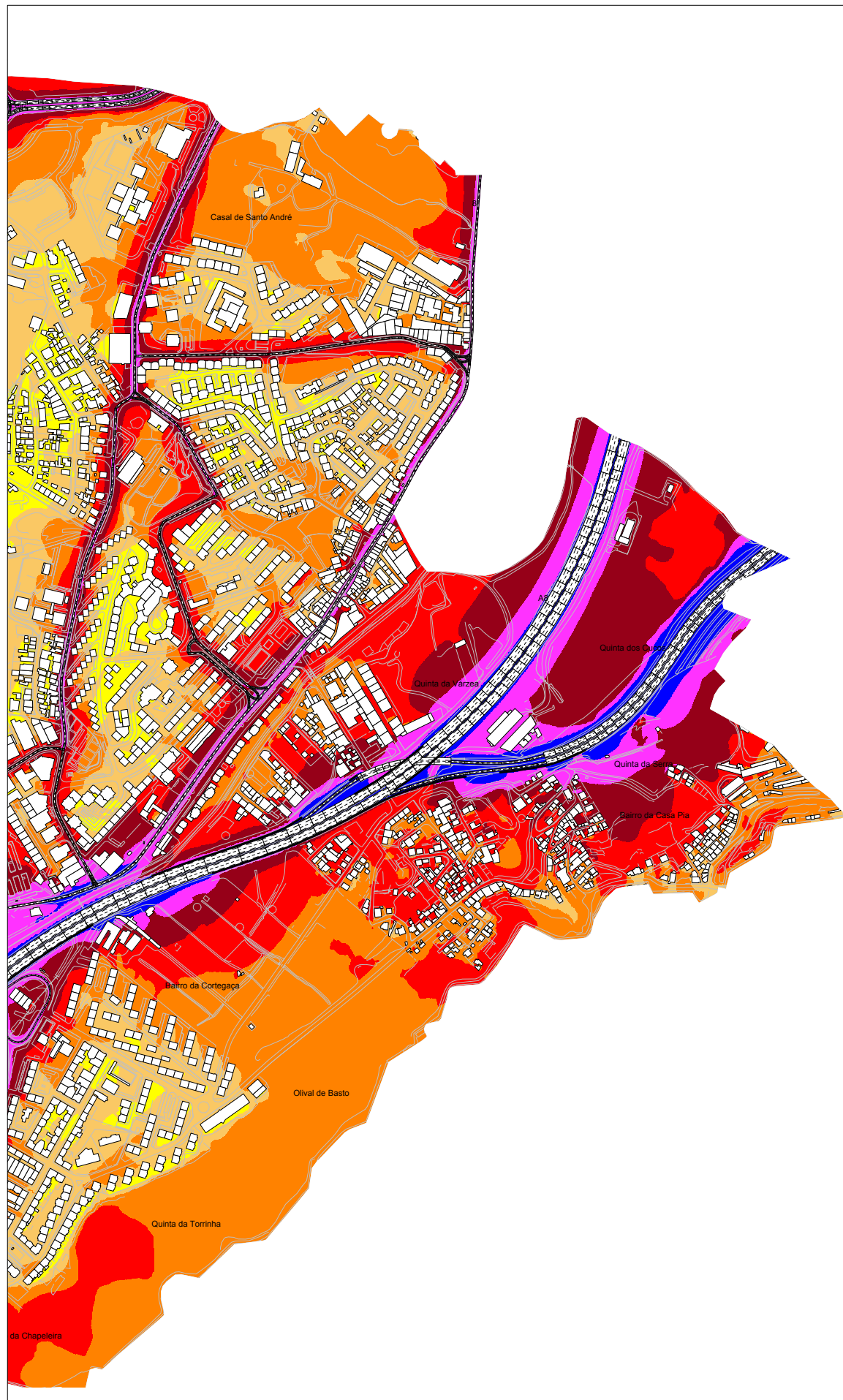




Lden dB(A)

- < 45.0 dB
- > 45.0 dB
- > 50.0 dB
- > 55.0 dB
- > 60.0 dB
- > 65.0 dB
- > 70.0 dB
- > 75.0 dB

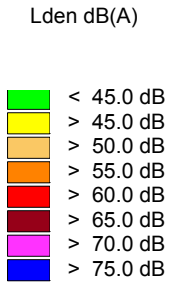
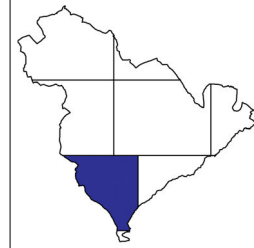
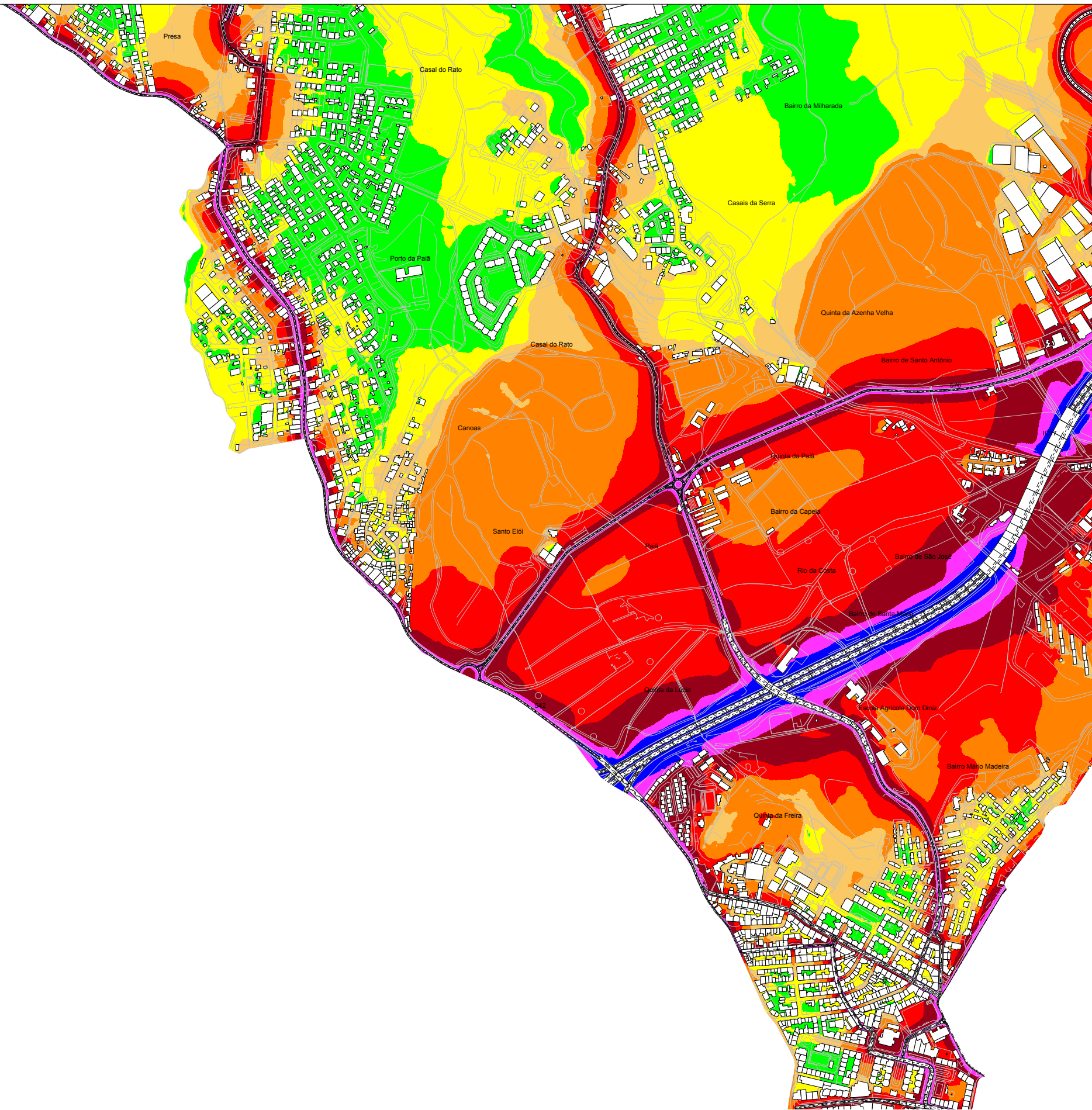




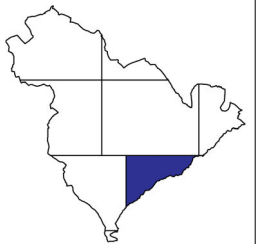
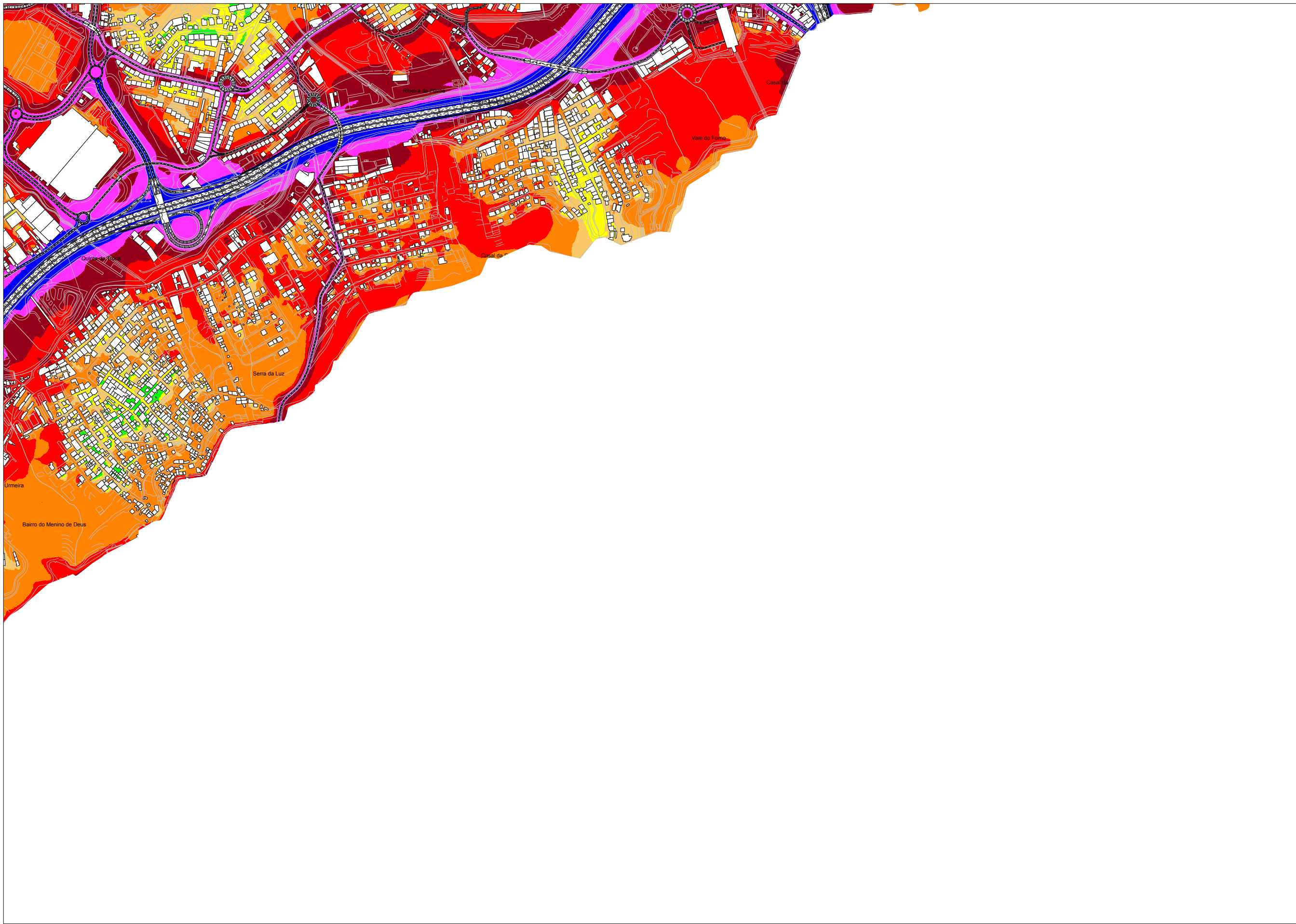
Lden dB(A)

- < 45.0 dB
- > 45.0 dB
- > 50.0 dB
- > 55.0 dB
- > 60.0 dB
- > 65.0 dB
- > 70.0 dB
- > 75.0 dB





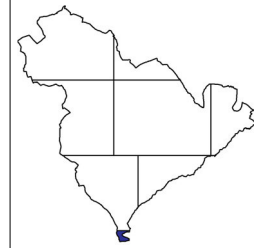




Lden dB(A)

- < 45.0 dB
- > 45.0 dB
- > 50.0 dB
- > 55.0 dB
- > 60.0 dB
- > 65.0 dB
- > 70.0 dB
- > 75.0 dB





Lden dB(A)

- < 45.0 dB
- > 45.0 dB
- > 50.0 dB
- > 55.0 dB
- > 60.0 dB
- > 65.0 dB
- > 70.0 dB
- > 75.0 dB