

**apa**

agência portuguesa  
do ambiente



**CT 150 – Gestão Ambiental**

**Workshop/Plenário da CT 150**

**2023.01.10**

**Luiz Oliveira (Ambi 22)**

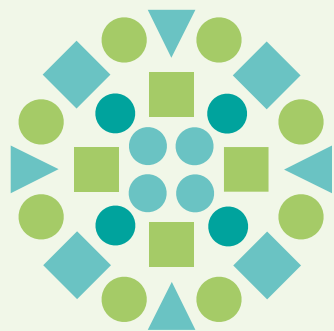
**Presidente da CT 150**

**[luis.oliveira@amb22.pt](mailto:luis.oliveira@amb22.pt)**



**REPÚBLICA  
PORTUGUESA**

**AMBIENTE E  
AÇÃO CLIMÁTICA**



**apa**

agência portuguesa  
do ambiente



## **SC 3 - Rotulagem ambiental**





# Consumo consciente

Os consumidores estão mais conscientes do que nunca, com 65 % dispostos a pagar mais por produtos e serviços que são ambiental e socialmente responsáveis.

Fonte: Relatório ISO Foresight Trend Report – Outubro 2022



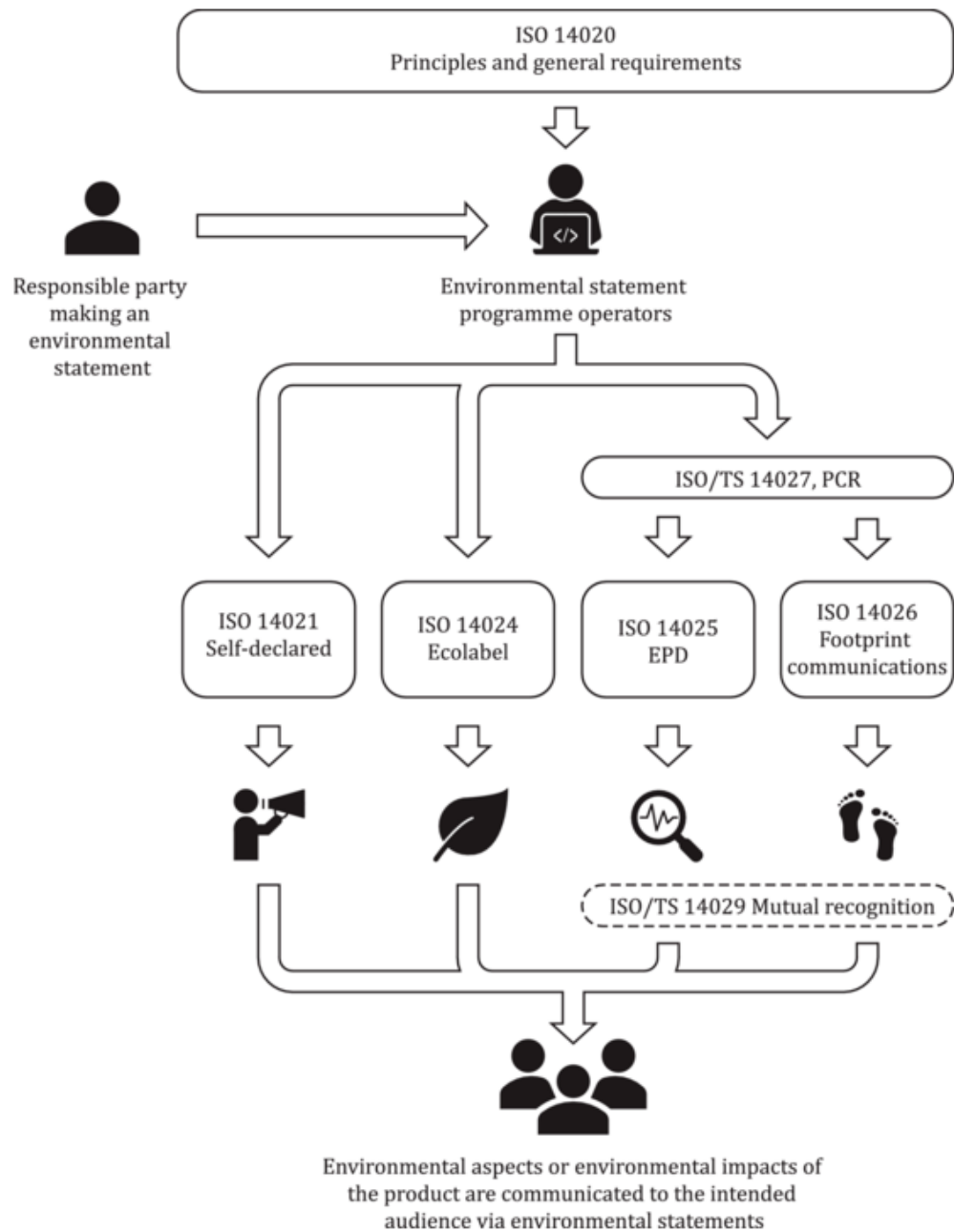
As normas ISO da série 14020 pretendem desempenhar um papel importante na implementação da produção sustentável, ajudando:

1 - as empresas a assegurar que as mudanças que fazem terão um impacto real para o ambiente,

2 - ao mesmo tempo que conferem aos consumidores ferramentas, como rótulos reconhecidos, para distinguir entre rótulos verdadeiros "ecológicas" e rótulos de "greenwashing".

# Família ISO 14020

Figure 1 – Structure of the ISO 14020 family of standards



# Família ISO 14020 – Português

<a href="#"><u>NP EN ISO 14020:2005</u></a> <a href="#"><u>ISO 14020:2022 (nova)</u></a>	Rótulos e declarações ambientais - Princípios gerais (ISO 14020:2000).	julho de 2005
<a href="#"><u>NP EN ISO 14021:2016</u></a>	Rótulos e declarações ambientais - Autodeclarações ambientais (Rotulagem ambiental Tipo II) (ISO 14021:2016).	setembro de 2016
<a href="#"><u>NP EN ISO 14024:2006</u></a> <a href="#"><u>ISO 14024:2018 (nova)</u></a>	Rótulos e declarações ambientais - Rotulagem ambiental Tipo I - Princípios e procedimentos (ISO 14024:1999).	dezembro de 2006
<a href="#"><u>NP ISO 14025:2009</u></a>	Rótulos e declarações ambientais - Declarações ambientais Tipo III - Princípios e procedimentos (ISO 14025:2006).	agosto de 2009



# Família ISO 14020 – Inglês/Francês

Standard and/or project under the direct responsibility of ISO/TC 207/SC 3

## ISO 14020:2022

Environmental statements and programmes for products — Principles and general requirements

## ISO 14021:2016

Environmental labels and declarations — Self-declared environmental claims (Type II environmental labelling)

## ISO 14021:2016/Amd 1:2021

Environmental labels and declarations — Self-declared environmental claims (Type II environmental labelling) — Amendment 1: Carbon footprint, carbon neutral

## ISO 14024:2018

Environmental labels and declarations — Type I environmental labelling — Principles and procedures

## ISO 14025:2006

Environmental labels and declarations — Type III environmental declarations — Principles and procedures

## ISO 14026:2017

Environmental labels and declarations — Principles, requirements and guidelines for communication of footprint information

## ISO/TS 14027:2017

Environmental labels and declarations — Development of product category rules

## ISO/TS 14029:2022

Environmental statements and programmes for products — Mutual recognition of environmental product declarations (EPDs) and footprint communication programmes

# ISO 14020:2022 (Dezembro 2022)

Esta terceira edição cancela e substitui a segunda edição ([ISO 14020:2000](#)), que foi tecnicamente revista.

As principais alterações são as seguintes:

- foram acrescentados dois novos conceitos e termos: "declaração ambiental" e "programa de declaração ambiental";
- foram acrescentados termos e definições genéricos a todos os tipos de programas de declaração ambiental e a declarações ambientais;
- os princípios aplicáveis às declarações ambientais anteriormente proferidas na família de normas ISO 14020 foram consolidados e atualizados, tendo sido colocados neste documento os requisitos anteriormente incluídos nesses princípios;
- foram acrescentados requisitos gerais aplicáveis a todos os tipos de programas de declaração ambiental e declarações ambientais.





## 3.2 Terms related to environmental statements

### 3.2.1

#### environmental statement

DEPRECATED: environmental claim

information on one or more *environmental aspect(s)* ([3.1.3](#)) or *environmental impact(s)* ([3.1.4](#)) of a *product* ([3.2.11](#)), which intends to inform an *intended audience* ([3.2.14](#)) and intends to influence the market of this product

Note 1 to entry: The environmental statement can represent a point in time or can cover a period of time.

Note 2 to entry: Types of environmental statement include, but are not limited to:

- a) *self-declared environmental claims* ([3.2.6](#));
- b) *ecolabels* ([3.2.7](#));
- c) *environmental product declarations* ([3.2.8](#));
- d) *footprint communications* ([3.2.10](#)).

Note 3 to entry: An environmental statement can appear on a product or packaging as a label, a symbol, a logo, an *electronic product label* ([3.2.2](#)) or a *machine-readable code* ([3.2.3](#)). It can also be communicated in other ways, e.g. in web-based product data or in an advertisement.



## 3.3 Terms related to programmes

### 3.3.1

#### **environmental statement programme**

rules and procedures for providing an *environmental statement* ([3.2.1](#))

Note 1 to entry: Environmental statement programmes can be carried out at international, regional, national or sub-national levels.

Note 2 to entry: A programme can also be called a scheme.

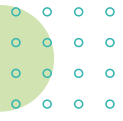
Note 3 to entry: An environmental statement programme can include requirements for *conformity assessment* ([3.5.1](#)).

Note 4 to entry: In the case of *self-declared environmental claims* ([3.2.6](#)), the environmental statement programme is typically established by the *responsible party* ([3.2.13](#)). For other types of environmental statement, the environmental statement programme is typically a party that is external to the responsible party.

Note 5 to entry: In the case of self-declared environmental claims, the environmental statement programme consists of the information and records used to support the claim, in accordance with ISO 14021.

[SOURCE: ISO 14065:2020, 3.1.6, modified — “statement” replaced “information” in the term. “statement” replaced “information statement” in the definition. Notes to entry replaced.]





## 6 General requirements for environmental statement programmes

### 6.1 Environmental statement programme

**6.1.1** Environmental statements shall be made based on an environmental statement programme that conforms to [Table 1](#).



**Table 1 — Elements in an environmental statement programme applicable to different types of environmental statement**

Selected elements in environmental statement programmes included in ISO 14020	Environmental statement types				
	Self-declared environmental claims	Ecolabels	EPDs	Footprint communications	Other environmental statements <sup>a</sup>
Related standards	ISO 14021	ISO 14024	ISO 14025	ISO 14026	
Environmental statement programme <sup>b</sup> (6.1.2)	required	required	required	required	required
Involvement of interested parties (6.3)	optional	required	required	optional	optional
Supporting information (6.8.2)	required	required	required	required	required
LCA or footprint study based on PCR	optional <sup>c</sup>	optional <sup>c</sup>	required	required	optional
Conformity assessment (6.7)	optional	required	required	required	required
Documentation <sup>d</sup> (6.8)	required	required	required	required	required

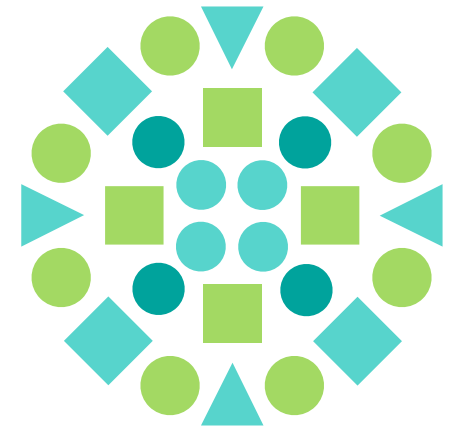
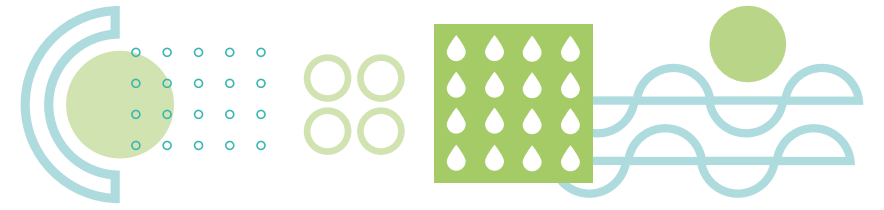
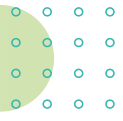
<sup>a</sup> Other environmental statement types can have additional requirements in documents outside the ISO 14020 family of standards, e.g. in ISO 14044 for comparative assertions.

<sup>b</sup> Any environmental statement programme needs some documentation of the rules. General programme instructions can provide or refer to this detail.

<sup>c</sup> In relation to LCA or a footprint study based on PCR, "optional" is understood to mean LCA using PCR is optional, and can be recommended but is not necessary for a self-declared environmental claim (i.e. 14021) or an ecolabel (i.e. 14024).

<sup>d</sup> Any environmental statement type needs documentation according to its rules.





**OBRIGADO**

[apambiente.pt](http://apambiente.pt)

**apa**

agência portuguesa  
do **ambiente**

